

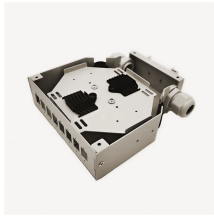
Mali Energy-Saving Cable Trays



Mali Energy-Saving Cable Trays



Energy saving molded cable trays are designed to reduce energy consumption and resource waste through structural optimization and functional design. They utilize a mold-press forming process, ...



Technical Specifications of Cable Tray - Free download as Word Doc (.doc), PDF File (.pdf), Text File (.txt) or read online for free. The document provides technical specifications for cable trays and ...



Top 10 Cable Trays Manufacturers And Suppliers
Cable trays, as the name suggests, are structural systems used to hold and support cables and wires in ...



Snap Track ventilated aluminum cable tray for power generation, utility-scale solar BOS, substations, and battery energy storage. 40-60% labor savings vs conduit.



Types of Cable Trays: Benefits and Uses. Cable trays are a durable and organized solution for supporting and protecting cable networks in various installations playing a key role in ...



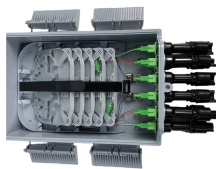
Being one of the leading Cable Tray Manufacturers in Mali, we work for customer satisfaction and design and deliver the standard and customized range accordingly. We have a comprehensive range that ...



Fabricated in numerous styles (wiremesh, ladder, ventilated trough, channel, and solid-bottom) and sizes, cable tray provides the greatest versatility among cable support systems, while offering ...



Under the condition of high load-bearing requirements, the opening rate exceeds 30%, which is integrated with other cable trays, making it a perfect solution for data center power cables.



This saves material, lowers cost, and supports energy conservation and emission reduction. The lightweight tray features reinforced ribs, with bent plates that redirect load paths to improve bending ...



Snap Track ventilated aluminum cable tray for power generation, utility-scale solar BOS, substations, and battery energy storage. 40-60% labor savings vs conduit.



Ectray cable trays and cable ladders provide high-strength cable protection that protects the cables from external factors. Support systems can be manufactured with thicknesses from 2mm to 6mm with Pre ...

Contact Us

For more information, pricing, or custom network solutions, please contact us:

Website: <https://hashherbcafe.co.za>

Email: hello@hashherbcafe.co.za

Phone: +27 63 814 7295

Address: 15 Galaxy Road, Linbro Business Park, Johannesburg, 2065, South Africa

This document is for informational purposes only. Specifications subject to change without notice.

