

## Maintenance and Maintenance of 10G Optical Switches



### Overview

This article will explore best practices for deploying 10G optical modules and offer tips for troubleshooting and maintaining their performance to maximize the longevity and efficiency of your network. Common types of optical modules include SFP, SFP+, SFP28, QSFP, QSFP28, etc. Their compact size, low power consumption, and versatility across multimode and single-mode fiber make them a critical. Single-fiber bidirectional (BIDI) optical modules must be used in pairs. For example, SFP-10G-BXD1 must be used with SFP-10G-BXU1. If the SFP-10G-ER-1310 is connected. The standard rate optical transceiver, with its mature transmission performance—based on NRZ or PAM4 modulation and supporting per-channel data rates of 25G/50Gbps—has become a key component in building modern network architectures.

## Maintenance and Maintenance of 10G Optical Switches



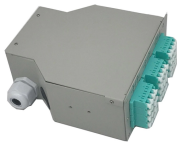
Discover the 9 types of maintenance and how they fit into preventive and corrective strategies. Learn when each applies in practice. [Click here to read the article.](#)



**Maintenance Definition** An activity necessary to keep an asset functioning as designed during its operations and maintenance phase of a project.



To meet such expectations, a 10G-EPON system must be able to mini-mize service downtime and switch lines, and update soft-ware without human intervention. This paper describes the results we ...



**MAINTENANCE** meaning: 1. the work needed to keep a road, building, machine, etc. in good condition: 2. money that a.... [Learn more.](#)



Maintenance and upkeep of optical modules are essential for the normal operation and troubleshooting of network devices. Here are some common maintenance tips: Regular Cleaning: ...



A complete professional guide covering all key installation, cleaning, ESD, compatibility, environmental, and safety precautions for 10G SFP+ optical modules.



Maintenance management includes all care for machinery, tools, equipment, and other company assets with the goal of ensuring good operating condition of the assets, preventing failures, ...



Single-fiber bidirectional (BIDI) optical modules must be used in pairs. For example, SFP-10G-BXU1 must be used with SFP-10G-BXD1.



Maintenance combines proactive and reactive actions to keep machinery, facilities, and equipment running efficiently and safely. Different types of maintenance, like preventive, predictive, ...



A comprehensive guide covering the concept of maintenance, its different types, advantages, and its uses across industries.



Conclusion Proper installation and maintenance of 10G optical modules are critical for ensuring high performance and reliability in modern networks. By following best practices during ...



This manual provides detailed instructions for the installation, operation, and maintenance of the Ubiquiti Networks UniFi Aggregation Switch, model USW ...



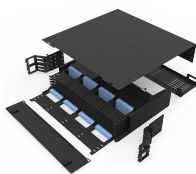
By following best practices for deploying and maintaining 10G optical modules, network administrators can achieve seamless installation, reliable ...



By following best practices for deploying and maintaining 10G optical modules, network administrators can achieve seamless installation, reliable operation, and efficient troubleshooting.



Never stare into open optical ports. To prevent damage to a transceiver and to any connected cables, disconnect all cables before installing or removing a module. Prior to installing a ...



All action taken to retain materiel in or to restore it to a specified condition. It includes: inspection, testing, servicing, classification as to serviceability, repair, rebuilding, and reclamation.  
2. All supply ...



Unlike black-box systems, white-box switches typically run open-source network operating systems, such as Picos, Cumulus, and SONiC. For users deploying the same open-source system, the ...



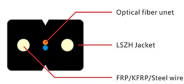
Understand about the most important concepts of maintenance, preventive, predictive, and reactive maintenance strategies. Explore key areas like reliability-centered maintenance, ...



Maintenance functions can be defined as maintenance, repair and overhaul (MRO), and MRO is also used for maintenance, repair and operations. Over time, the terminology of maintenance and ...



The meaning of MAINTENANCE is the act of maintaining : the state of being maintained : support. How to use maintenance in a sentence.



Learn about the installation and maintenance of 10G XFP optical modules—ensuring optimal performance, longevity, and efficiency for high-speed network connections.

## Contact Us

For more information, pricing, or custom network solutions, please contact us:

Website: <https://hashherbcafe.co.za>

Email: [hello@hashherbcafe.co.za](mailto:hello@hashherbcafe.co.za)

Phone: +27 63 814 7295

Address: 15 Galaxy Road, Linbro Business Park, Johannesburg, 2065, South Africa

This document is for informational purposes only. Specifications subject to change without notice.

