

## MPO Jumper Principle



### Overview

An MPO jumper, where MPO stands for Multi - Fiber Push On, is a specialized optical fiber cable assembly designed for high - density fiber optic connections. They use low insertion loss MTP®/MPO connectors which can reduce signal loss during transmission to support the seamless migration to higher data rates in the data. In practical deployments, the three most common cable assemblies are MTP®/MPO Jumper, MTP®/MPO Harness, and MTP®/MPO Trunk. These assemblies differ in structural design, connection methods, and application scenarios. Common types. MPO jumper cables (also known as MPO fiber patch cables) are fiber optic cables terminated with MPO connectors on both ends, enabling multi-fiber high-density connections between network equipment. Unlike traditional duplex patch cords, MPO jumpers support multiple fibers in a single connector. It refers to the loss of optical power when light passes through an MPO jumper.

## MPO Jumper Principle



Learn the differences between MTP®/MPO jumper, harness, and trunk fiber cables. This guide explains their structures, applications, and how to choose the right solution for high-density ...



Low loss single-mode MPO connectors deliver the performance and reliability needed in today's demanding high-speed broadband and data networks. Multimode LaserWave® MPO jumpers and ...



In this article, we will explore the MPO light module optical fiber jump management method and discuss best practices for managing MPO jumpers.



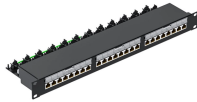
This blog will delve into the key parameters of MPO jumpers, explaining their significance and how they impact the performance and suitability of these jumpers for different scenarios.



MPO jumper for high-density fiber connectivity, supporting 40G, 100G, 400G and up to 800G networks. Available in OS2, OM3, OM4 and OM5, with low insertion loss and reliable performance for data ...



In high-density optical systems, MPO jumpers enable cleaner fiber panels, faster reconfiguration, and efficient growth. When deployed properly, an MPO jumper becomes a backbone component in high ...



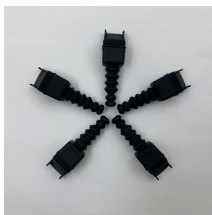
In this article, we will discuss key considerations when installing MPO/MTP® fiber optic jumpers to ensure optimal performance and reliable connectivity. This guide will help you understand ...



MPO jumpers allow data center operators to fit more connections into a smaller area, reducing the overall cabling footprint. This not only saves physical space but also simplifies the cable ...



The jumpers usually connect pre-terminated cassettes or panels in main and horizontal cabling and can also be directly connected to the equipment through the MTP®/MPO connector.



An introduction to MPO/MTP® jumper, harness, and trunk cables, explaining their differences and applications in data center and AI network.

## Contact Us

For more information, pricing, or custom network solutions, please contact us:

Website: <https://hashherbcafe.co.za>

Email: [hello@hashherbcafe.co.za](mailto:hello@hashherbcafe.co.za)

Phone: +27 63 814 7295

Address: 15 Galaxy Road, Linbro Business Park, Johannesburg, 2065, South Africa

This document is for informational purposes only. Specifications subject to change without notice.

