

Low-loss fault locator for Australian optical cables used in oil and petrochemical industries



Low-loss fault locator for Australian optical cables used in oil and p



Visual Fault Locators (VFL) are used for installation, fault finding, continuity checking, polarity checking, verifying a signal path, and identifying fibres.



The visual fault locator (VFL) is an essential tool that quickly and easily locates problem areas in fiber cables. By pinpointing the exact location of fiber damage, technicians can diagnose, troubleshoot, ...



The VFI4 Visual Fault Identifier from AFL is a compact, high-powered tool for identifying faults in fiber optic networks. It offers a range of up to 10 km, ideal for locating defects, bends, and poorly mated ...



From hazardous to safe areas, we supply respected brands that provide cable management, lighting, test and measurement and safety products for industrial project needs.



The convenient FLS-140 locates faults visually by creating a bright red glow at the exact location of the fault on singlemode or multimode optical fibres. With a pocket-size pen-style design, this visual fault ...



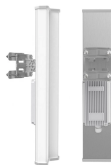
The visual fault locator (VFL) is an essential tool that quickly and easily locates problem areas in fiber cables. By pinpointing the exact location of fiber damage, technicians can diagnose, troubleshoot, ...



FBV Pen Type visual fault locator is used to identify fiber and locate faults of single or multi-mode fiber, it is a helpful assistant in finding dead zones, a basic maintenance tool for any fiber-optic network.



FVFL-204 Pen Shape Visual Fault Locator is a compact but powerful fibre optical cable test tool, with an output power up to 1mW, which can be used to locate sharp bends & breaks in jacket or bare fibre ...



It finds breakpoints, poor connections, bending or cracking in fiber optic cables; and it can find faults in an OTDR dead zone and is used for end-to-end visual fiber identification. The Visual Fault Locator ...

Contact Us

For more information, pricing, or custom network solutions, please contact us:

Website: <https://hashherbcafe.co.za>

Email: hello@hashherbcafe.co.za

Phone: +27 63 814 7295

Address: 15 Galaxy Road, Linbro Business Park, Johannesburg, 2065, South Africa

This document is for informational purposes only. Specifications subject to change without notice.

