

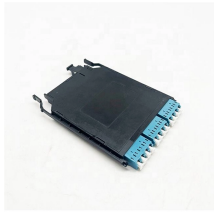
Liechtenstein Fiber Ethernet Switch LPO



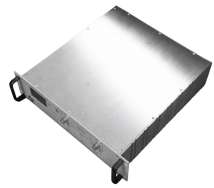
Liechtenstein Fiber Ethernet Switch LPO



The specification defines the necessary optical and electrical requirements for a robust ecosystem of LPO-compatible switch, NIC, and module ...



“The launch of the Micas 51.2T CPO Ethernet switch, powered by Broadcom's Tomahawk 5-Baily chipset, marks a pivotal milestone in the evolution of data center interconnects, ...



While CPO is ideal for ultra-dense, high-performance AI supercomputing environments, LPO is a much easier upgrade path for existing data centers, making it the preferred option for switch ...



100G-DR-LPO targets speeds of up to 800 Gigabit Ethernet, the high-speed connectivity required for AI and machine learning applications, and ca be used in networking and computing ...



The leaf-and-spine network architecture, prevalent in modern data centers, relies on fiber optic connections between ToR switches and spine switches. LPO further extends the use of fiber by ...



Dell has launched support for pure LPO connectivity between the switch and the server, using 400GbE LPO optics on Broadcom Thor 2 NICs, connecting to 800GbE LPO optics on Dell ...



The specification defines the necessary optical and electrical requirements for a robust ecosystem of LPO-compatible switch, NIC, and module products. The specification covers 100 Gb/s, ...



The focus of the LPO MSA is to specify module and network equipment level interoperability requirements that span both electrical and optical technologies. Starting at 100 Gb/s per lane, the ...



Dell has launched support for pure LPO connectivity between the ...



Linear pluggable optics (LPO) is garnering more attention as a way to quickly and efficiently move data in and out of server racks, but a lack of standards for connecting the optical ...



What Liechtenstein has gained from Vertical Separation and its Fiber-Optic Model? Following the completion of the nationwide FTTH fiber-optic network rollout in 2023, a new study provides ...



The biggest power consumers in an 800G switch are the optical transceivers. LPO cuts per-module power by 40-50% and latency from 8-10 ns to under 3 ns. This guide explains how LPO ...

Contact Us

For more information, pricing, or custom network solutions, please contact us:

Website: <https://hashherbcafe.co.za>

Email: hello@hashherbcafe.co.za

Phone: +27 63 814 7295

Address: 15 Galaxy Road, Linbro Business Park, Johannesburg, 2065, South Africa

This document is for informational purposes only. Specifications subject to change without notice.

