

LED lighting switch or fiber optic cable



LED lighting switch or fiber optic cable



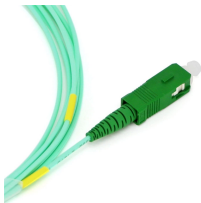
The light-emitting diode (LED) is today's most energy-efficient and rapidly developing lighting technology. Quality LED light bulbs last longer, are more durable, and offer comparable or better light ...



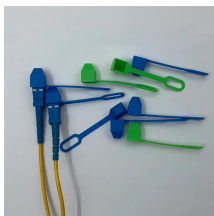
Need backlighting for your membrane switch? Compare EL, LED, and fiber optic options to find the perfect balance of brightness, durability, and cost for your design.



A light-emitting diode (LED) is an electronic component that uses a semiconductor to emit light when current flows through it. Electrons in the semiconductor recombine with electron holes, thereby ...



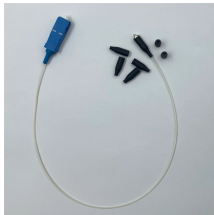
First conceived in 1962 by Nick Holonyak Jr., continuous improvement of the light emitting diode (LED) made this electronic device a more relevant, less expensive alternative to fiber optic and ...



LED fiber optic lights kit includes LED fiber optic cables which are available in different numbers and lengths, a fiber optic illuminator (with plug), and an RF remote.



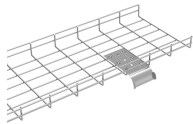
What is a Light Emitting Diode (LED)? A Light Emitting Diode (LED) is a special type of PN junction diode. The light emitting diode is specially doped and made of a special type of ...



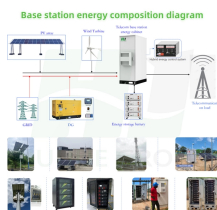
The correct past and past participle of lead is spelled led. If you aren't sure whether to use led or lead as the verb in your sentence, try reading it aloud to yourself.



In this blog, we'll explore five key aspects you need to know about LED fiber optic lighting, shedding light on why it's becoming the preferred choice for many applications.



Both LED and fiber optic lighting offer a wealth of benefits, each suited to different environments and goals. Understanding their pros and cons enables smarter decision-making and ...



LED technology has become the default in modern lighting for good reason: it is the most efficient, longest-lasting, and most versatile light source available at scale.



Because fiber optic lighting and LED lighting are fundamentally different, and the performance results are also varied, they also have an emphasis on the sales market.



While Fiber Optic lighting is preferred for jobs such as wire bonding or soldering of fine-pitch components, pure white LED light is preferred for the detailed inspection of circuit boards, welds, ...



LED stands for light emitting diode. LED lighting products produce light up to 90% more efficiently than incandescent light bulbs. How do they work? An electrical current passes through a microchip, which ...



A light-emitting diode (LED) is a small electronic device that emits light when an electric current flows through it. LED works by passing electricity through a semiconductor, which releases ...



An LED (light-emitting diode) is a semiconductor device that emits infrared or visible light when charged with an electric current.



Light emitting diodes, commonly called LEDs, are real unsung heroes in the electronics world. They do many different jobs in all kinds of devices. They form numbers on digital clocks, transmit information ...



In conclusion, LED light fiber optic cables represent a significant step toward sustainable lighting solutions. With their safety, flexibility, low maintenance needs, and energy efficiency, they are ...



This article is composed as a brief understanding guide to LED, which includes a brief introduction, the electrical symbol of LED, types, construction, characteristics, LED Drivers and many.



Unlike traditional incandescent bulbs or fluorescent lamps, an LED is a semiconductor device that emits light when electrical current passes through it in the forward direction.



Both fiber optic lights and LED lights offer unique benefits and are suited for different applications. Fiber optic lighting is perfect for decorative, architectural, and safety-sensitive installations, while LED ...

Contact Us

For more information, pricing, or custom network solutions, please contact us:

Website: <https://hashherbcafe.co.za>

Email: hello@hashherbcafe.co.za

Phone: +27 63 814 7295

Address: 15 Galaxy Road, Linbro Business Park, Johannesburg, 2065, South Africa

This document is for informational purposes only. Specifications subject to change without notice.

