

## LANmark Fiber Optic Patch Cord



## LANmark Fiber Optic Patch Cord



This document provides information on Nexans LANmark-OF Slimflex Patch Cords for singlemode fiber, including their design, characteristics, and specifications. The patch cords are designed for indoor ...



A patch cord is always fitted with connectors on both ends of the cable. Types of patch cords can include: optical fiber, coaxial cables, single-conductor wires, or shielded and un-shielded cables that ...



Multimode Patch Cables Single Mode Patch Cables MTP/MPO Trunk Cables & Cassettes Mode Conditioning Cables Overstock Products Fiber Optic Adapters Fiber Optic Attenuators Media ...



We offer fiber optic materials from Test Equipment, Bulk Cable and Fusion Splicers to Tools, Patch Cables and Consumables.



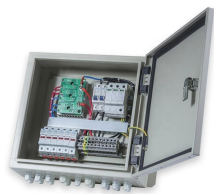
Nexans LANmark-OF patch cords are designed according to the "Cross-Over" wiring principle to improve field installation (A1-B2, B1-A2). This conforms to the requirements of IEC 11801 and EN ...



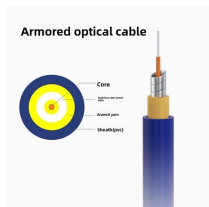
Nexans LANmark-OF optical fibre patch cords have been designed for indoor applications in support of high speed protocols. Details on the supported distances can be found in the LANmark-OF warranty ...



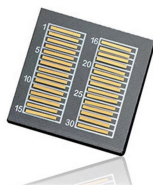
Manufacturer and distributor of fiberopticpatchcords. Cords are available in 1 meter, and used for Ethernet connection, fiber channels, infiniband, ATM, and gigabit Ethernet. Fiber Optic Patch ...



Get low-loss fiber patch cables & cords with various connector options that support fiber optic cabling up to 400G. 100% tested. Customized cables available.



Fiber Patch Cables, Multimode & Singlemode Duplex Fiber Optic Cables, Secure Order Fiber Patch Cords, Preferred Mil. Edu. Gov. Pricing, Same Day Shipping From CA USA, Verified Reviews



Aginode LANmark-OF patch cords are designed according to the "Cross-Over" wiring principle to improve field installation (A1-B2, B1-A2). This conforms to the requirements of IEC 11801 and EN ...

## Contact Us

For more information, pricing, or custom network solutions, please contact us:

Website: <https://hashherbcafe.co.za>

Email: [hello@hashherbcafe.co.za](mailto:hello@hashherbcafe.co.za)

Phone: +27 63 814 7295

Address: 15 Galaxy Road, Linbro Business Park, Johannesburg, 2065, South Africa

This document is for informational purposes only. Specifications subject to change without notice.

