

Kuwait CE Certified Transimpedance Amplifier QSFP



Overview

This QSFP-DD dual pluggable EDFA booster amplifier offers a optical input range and provides a +20dB nominal gain to a C-Band DWDM link. The product has compact size, excellent optical parameter and built-in control circuit, which can be directly. The Lumentum 100G QSFP28 LR4 Optical Transceiver is a full duplex, photonic-integrated optical transceiver that provides a high-speed link at aggregated data rate of either 103.81 Gbps over up to 10 km of SMF28. The module complies with IEEE 802.3-2015 Clause 88 and 83E standard and. QSFP-DD form factor EDFA is a pluggable dual EDFA product designed for C-band 8 channels DWDM amplification. PRODUCT SPECIFICATION & FEATURES QSFP-DD MSA. ELECTRIC OFFICE MACHINES incl. PHOTOCOPIERS, PAPER SHREDDERS, STAPLERS, SHARPENERS. ETC. ELECTRIC TELECOM EQUIPMENT incl. & CORDLESS PHONES, MOBILE PHONES, STAND ALONE FAXES & MODEMS HOUSEHOLD & COMMERCIAL VACUUM CLEANERS, WATER SUCTION APPLIANCES, SURFACE CLEANING APPLIANCES AND. Highly integrated low power NRZ/PAM4 digitally assisted transceiver technology with sophisticated calibration and self-test features. Ideal for short reach optical interconnect where latency is of essence The FJS1000 quad 64GBd Linear

Mach-Zehnder modulator driver with 4VP-P output and 1. It is configured for Automatic Gain Control (AGC) by default and can be further.

Kuwait CE Certified Transimpedance Amplifier QSFP



This QSFP-DD dual pluggable EDFA booster amplifier offers a optical input range and provides a +20dB nominal gain to a C-Band DWDM link. The dual pluggable ...



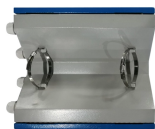
Highly integrated low power NRZ/PAM4 digitally assisted transceiver technology with sophisticated calibration and self-test features. Ideal ...



This QSFP-DD dual pluggable EDFA booster amplifier offers a optical input range and provides a +20dB nominal gain to a C-Band DWDM link. The dual pluggable EDFA connects to a composite DWDM ...



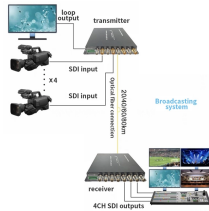
Each data stream is recovered by a PIN photodetector transimpedance amplifier, retimed and passed to a CAUI-4 compliant output driver. This module features a hot-pluggable electrical interface, low ...



QSFP-DD form factor EDFA is a pluggable dual EDFA product designed for C-band 8 channels DWDM amplification. It is designed to be compatible with QSFP-DD MSA on mechanical and electrical ...



Accelink pluggable amplifiers are a series of EDFAs that support hot plug and are compatible with various pluggable small form factor standards, such as XFP/CFP/CFP2/QSFP28/QSFP-DD/OSFP.



July 11, 2019 - QSFP-DD Hardware Specification for QSFP DOUBLE DENSITY 8X PLUGGABLE TRANSCEIVER - Rev 5.0 May 8, 2019 - Common Management Interface Specification - Rev 4.0



Optimizes 400Gbps short links with reaches up to 45km using 16QAM transmission. Ideal for unamplified point-to-point links.



HOUSEHOLD & COMMERCIAL VACUUM CLEANERS, WATER SUCTION APPLIANCES, SURFACE CLEANING APPLIANCES AND FLOOR TREATMENT APPLIANCES INCL. ...



Impressive Low-Power TIA, combined with Credo DSPs and Laser Drivers, creates a complete optical chipset solution for Hyperscale Data Centers ...

Contact Us

For more information, pricing, or custom network solutions, please contact us:

Website: <https://hashherbcafe.co.za>

Email: hello@hashherbcafe.co.za

Phone: +27 63 814 7295

Address: 15 Galaxy Road, Linbro Business Park, Johannesburg, 2065, South Africa

This document is for informational purposes only. Specifications subject to change without notice.

