

## KVM switcher not displaying optimally



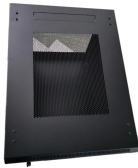
### Overview

Dual monitor setups require two video connections to the KVM for proper display. Problem 2: The KVM switch's lights are not on and it won't power on. For instance, when you try to handshake with your monitor, your graphics driver can just give up after a while. How to power cycle: Unplug everything. That's right, even unplug your monitor's power cord from the back of your KVM switches sometimes struggle to handle certain resolutions or refresh rates, especially if they're not explicitly supported by the switch. When I run "Preferences->Display", the "Resolution" choices range from 1920x1200.

## KVM switcher not displaying optimally



Use a different video cable, KVM switch, video source, and video destination in your setup to see if the problem persists. Ideally, you should test a component that you know works in another setup.



Quick fixes for KVM switch monitor not working. Learn how to resolve common monitor issues including detection problems, switching delays, and blank screen.



I have an issue with the display resolution when using a KVM switch. My setup is the following: There is no issue when the screen is connected directly to the PC; the display is recognized as "Dell P2210", ...



Hoping to find some help with my pc setup, I've recently changed docking station to a KVM Switch but I'm having a lot of issues with my monitor setup. The first issue is that the resolution ...



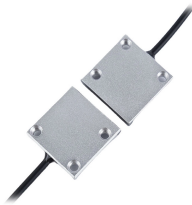
I have gathered some complaints, feedback, and also workarounds from users and experts. These may help you get the ...



Use this procedure to diagnose monitor problems when the monitor is connected to a KVM switch on a 1x8 or 2x8 Console Manager.



The options in the EDID are what should be seen in the Display app. Usually, when the options in the Display app are not correct, the EDID is not be properly passed.



If the KVM switch does not store or transmit EDID information properly, the host computer may fall back to incorrect or suboptimal display settings. Symptoms: Inability to use native ...



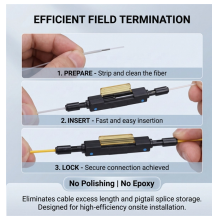
Quick fixes for KVM switch monitor not working. Learn how to resolve common monitor issues including detection problems, switching delays, and blank screen.



However, when using a KVM switch, you may encounter some common issues. We will now introduce some of these problems and provide solutions to help you make better use of a KVM ...



The KVM and peripherals can get into an error state for various reasons. For instance, when you try to handshake with your monitor, your graphics driver can just give up after a while.



I have gathered some complaints, feedback, and also workarounds from users and experts. These may help you get the whole picture of it and make a wiser decision. We also make a ...

## Contact Us

For more information, pricing, or custom network solutions, please contact us:

Website: <https://hashherbcafe.co.za>

Email: [hello@hashherbcafe.co.za](mailto:hello@hashherbcafe.co.za)

Phone: +27 63 814 7295

Address: 15 Galaxy Road, Linbro Business Park, Johannesburg, 2065, South Africa

This document is for informational purposes only. Specifications subject to change without notice.

