

## Jamaican 635nm Laser Diode Packaging

### Wall Mount Cabinet Server Racks

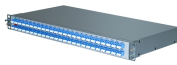
Glass Door,Cam Lock



## Jamaican 635nm Laser Diode Packaging



Proprietary design, packaging, and fiber coupling processes produce laser diodes with very high stability and low noise. Each laser diode is subject to extensive testing and burn-in before shipment to ensure ...



635 nm laser diodes are typically housed in protective enclosures made from durable materials such as cation-exchange glass-ceramics or metalized packages with optical windows. These housings ...



Exact specifications should be obtained from the product data sheet. Buy now, ships today.  
VLM-635-27 LPT-10 - Laser Diode 635nm 4mW  
2.6V ~ 5V 55mA Cylinder (12.5mm Dia) from Quarton Inc.. View ...



The Lasermate Group, Inc. LD635A5C15 is a red laser diode with a wavelength of 635nm and optical output power of 5mW (CW) at up to 50 o C, packaged in compact 5.6mm diameter base, TO-18 ...



Electrically shorten LD module and store in non-extreme conditions. Suggest using the constant current power supply.



The Laser Diode Inc. CWR 635 is a High Power multi-mode visible CW Laser (RoHS complaint) with a 100 um emitting area. The CWR 635 laser is an MOCVD grown laser structure and is available in a ...



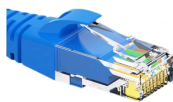
The company's main products are fiber-coupled lasers and laser modules between 375nm and 980nm, and RGB white special light sources. It has passed the ISO9001:2015 quality management system, ...



All Laser Diode Brands on One Site, 635nm, Unbiased SELECTION GUIDE, Get Pricing and Select the Best Laser Diode



Specifications are subject to change without notice. Ensure that you have the latest specifications by contacting us prior to purchase or use of the product.



Applications include high-speed data and telecommunications systems and instrumentation, and optical instruments requiring a laser diode light source. Backed by 30 day return-for-credit when the product ...

## Contact Us

For more information, pricing, or custom network solutions, please contact us:

Website: <https://hashherbcafe.co.za>

Email: [hello@hashherbcafe.co.za](mailto:hello@hashherbcafe.co.za)

Phone: +27 63 814 7295

Address: 15 Galaxy Road, Linbro Business Park, Johannesburg, 2065, South Africa

This document is for informational purposes only. Specifications subject to change without notice.

