

## Is it safe to cut fiber optic cables at will



## Is it safe to cut fiber optic cables at will



Since the eye does not constrict the pupil or blink, the beam can cause damage before the person is aware of the exposure. While the cable is fully connected, the light remains safely ...



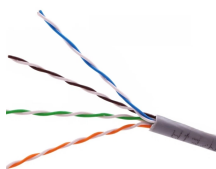
Put all cut fiber pieces in a properly marked container for disposal. Thoroughly clean your work area when you are done. Do not smoke while working with fiber optic systems. Note: Installation of fiber ...



Fiber optic cables are delicate and require the same caution as handling fine glassware. By avoiding these common mistakes, you stand to save both time and money, and more importantly, ...



Never cut fiber optic cables. Why not? Fiber optic cables use infrared light, which is invisible to the naked eye. Looking directly into the end of a live cable can cause serious eye damage. Always ...



Always use a fiber optic cutter to cut fiber optic cables or you can end up damaging the cable even more. As an alternative, you can use kevlar shears, which are high-precision shears that ...



This guide explores the most common causes of fiber-optic cable damage, explains the technical impact of each risk, and provides actionable strategies to protect your fiber infrastructure.



Rodents, particularly in urban areas, can chew through fiber optic cables. This can cause significant damage and disrupt services, especially if the cables are not adequately protected.



Don't cut fiber optic cables without taking safety precautions. Every time an optical fiber cable is cut in the field, small invisible glass shards can be produced. They are easily absorbed ...



Here are 5 vital rules for staying safe when you're working on fiber optic cables. 1. Know the standards that apply to your work.



Learn the most important cabling safety practices when working with fiber optic cables. From eye protection to proper disposal, this guide covers essential steps to keep technicians safe ...

## Contact Us

For more information, pricing, or custom network solutions, please contact us:

Website: <https://hashherbcafe.co.za>

Email: [hello@hashherbcafe.co.za](mailto:hello@hashherbcafe.co.za)

Phone: +27 63 814 7295

Address: 15 Galaxy Road, Linbro Business Park, Johannesburg, 2065, South Africa

This document is for informational purposes only. Specifications subject to change without notice.

