

Introduction to Wavelength Division Multiplexing Functions



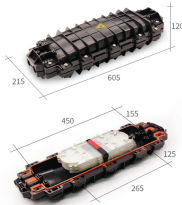
Introduction to Wavelength Division Multiplexing Functions



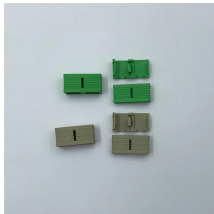
Wavelength division multiplexing (WDM) is a technique of multiplexing multiple optical carrier signals through a single optical fiber channel by varying the wavelengths of laser lights. WDM allows ...



In fiber-optic communications, wavelength-division multiplexing (WDM) is a technology which multiplexes a number of optical carrier signals onto a single optical fiber by using different ...



Wavelength Division Multiplexing (WDM) stands out as a cornerstone, enabling multiple data streams to travel simultaneously over a single fiber. This ...



Wavelength Division Multiplexing achieves its capacity increase by exploiting a physical property of light: different wavelengths, or colors, can travel through the same medium independently.



WDM therefore gives us the ability to combine multiple streams of data by assigning each its own wavelength of light. This way instead of each service using its own fiber they can now share the ...



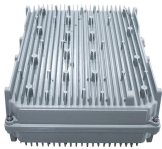
Wavelength division multiplexing (WDM) is a technology for increasing the transmission capacity of optical fiber communications by sending multiple data channels simultaneously through a single fiber, ...



Explore the fundamentals of Wavelength Division Multiplexing (WDM), its types, benefits, challenges, and future prospects in our detailed guide.



Wavelength Division Multiplexing (WDM) stands out as a cornerstone, enabling multiple data streams to travel simultaneously over a single fiber. This guide delves into the principles, types, ...



Wavelength Division Multiplexing (WDM) enables multiple optical signals to travel through a single fiber by using different wavelengths of light. This optical multiplexing technology maximizes the capacity of ...



WDM allows multiple optical signals, each carried at a specific wavelength, to be combined and transmitted through the fiber, effectively increasing the data-carrying capacity without ...



Wavelength division multiplexing (WDM) has enabled a revolution in communications technology. This article describes the technology, critical components of WDM systems, and transmission impairment ...

Contact Us

For more information, pricing, or custom network solutions, please contact us:

Website: <https://hashherbcafe.co.za>

Email: hello@hashherbcafe.co.za

Phone: +27 63 814 7295

Address: 15 Galaxy Road, Linbro Business Park, Johannesburg, 2065, South Africa

This document is for informational purposes only. Specifications subject to change without notice.

