

# **Intelligent Power Distribution Box for Government and Enterprises**



## Intelligent Power Distribution Box for Government and Enterprises



For demanding electricity distribution needs in max. 1000 V systems ABB's MNS PDUpro intelligent power distribution unit offers many benefits to the user



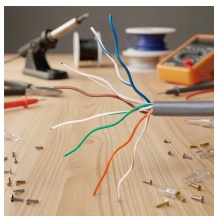
Smart power distribution is Siemens' holistic offering for intelligent, digitally supported power distribution that ensures maximum resilience, efficiency and sustainability.



Nijsha Enterprise manufactures premium power distribution boxes designed for reliability, safety, and efficiency in commercial and industrial applications. Built with heavy-duty materials, our boxes ...



The Smart 3000 Edge AI BOX processes data locally with edge computing, enabling rapid fault detection, warnings, and automated control of key devices like fans and pumps. It also supports ...



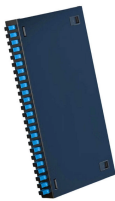
Sipolar manufactures smart PDUs, saving both time and electricity for demanding data centers. We also provide OEM intelligent PDUs tailored to your needs.



Huawei's Intelligent Power Distribution Solution contributes to the implementation of transparent sensing of power distribution transformer districts and the enhancement of intelligent service capabilities, ...



As a reputable power distribution box manufacturer supplier, CSQ Electric has established a strong reputation in the low-voltage electrical market. CSQ products are exported to over 60 countries and ...



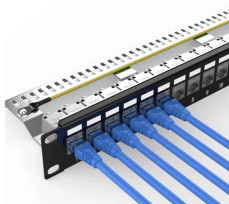
From decentralized energy, signal and data distribution to distribution boxes for smart buildings, we offer the right solution.



The Smart 3000 Edge AI BOX processes data locally with edge computing, enabling rapid fault detection, warnings, and automated control of key devices like fans ...



CHINT provide one-stop Intelligent Power Distribution Solutions solutions. From consulting services to engineering design and construction, to long-term project maintenance, CHINT is willing to work with ...



It comprehensively utilizes big data, cloud computing, and mobile internet to build an intelligent power grid distribution operation and maintenance management platform based on intelligent sensor ...

## Contact Us

For more information, pricing, or custom network solutions, please contact us:

Website: <https://hashherbcafe.co.za>

Email: [hello@hashherbcafe.co.za](mailto:hello@hashherbcafe.co.za)

Phone: +27 63 814 7295

Address: 15 Galaxy Road, Linbro Business Park, Johannesburg, 2065, South Africa

This document is for informational purposes only. Specifications subject to change without notice.

