

## Installation of sealing strips in distribution boxes



### Overview

Place a bead of asphalt-based sealant where the seal lip contacts the box. Cut the corrugated pipe to receive an American Dial-A-Flow™. Compress the first three corrugations of the pipe and insert. When installing outdoor junction box, ensure that the sealing strip or waterproof ring of weather proof box is in close contact with the surface of outdoor weatherproof box to prevent water from penetrating outdoor electrical junction box. Accepts 6" Pipe! Accepts 6" Pipe! Accepts 6" Pipe! Accepts 6" Pipe! How to install and utilize the pipe seals that come with the Polylok distribution boxes. Polylok offers the only catch basin and distribution box seal on the market that accepts multiple size pipes. Electrical enclosures protect sensitive equipment like wiring, circuits, and control systems from harsh environments. To open the seal tabs us a key or.

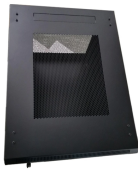
## Installation of sealing strips in distribution boxes



For standard installation instructions, reference the American Distribution Box Installation Instructions. Due to the unique twist-lock seal design, the seals may be easily adapted for increased head ...



Polylok offers the only catch basin and distribution box seal on the market that accepts multiple size pipes. After choosing your inlet/outlet holes and cutting them out, the seal is easy to install.



Face it, in a box full of wires everything is a detail. And we love our details: revolutionary tension-clamp terminals for reliability and installation speed; heavy-duty endcaps with easy-access starter holes; ...



Learn how to seal electrical enclosures effectively to protect equipment from moisture, dust, and harsh environments. Step-by-step guide and expert tips.



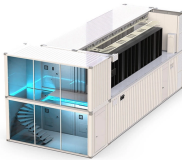
Lubricate your blade and cut following the angle of the circle impressions. Slide the seal into place from inside of the D-Box and tighten nut from the outside. Check to make sure you have completely ...



How to install and utilize the pipe seals that come with the Polylok distribution boxes.



It is achieved through the automated, contour-accurate application of a liquid seal consisting of two components that flow seamlessly into one another at its coupling point. As a result, it is almost ...



When installing outdoor junction box, ensure that the sealing strip or waterproof ring of weather proof box is in close contact with the surface of outdoor weatherproof box to prevent water ...

## Contact Us

For more information, pricing, or custom network solutions, please contact us:

Website: <https://hashherbcafe.co.za>

Email: [hello@hashherbcafe.co.za](mailto:hello@hashherbcafe.co.za)

Phone: +27 63 814 7295

Address: 15 Galaxy Road, Linbro Business Park, Johannesburg, 2065, South Africa

This document is for informational purposes only. Specifications subject to change without notice.

