

# Installation of lighting distribution boxes in South Africa



## Overview

This guide will walk you through the critical standards, components, and installation rules you must follow to ensure your electrical installation is compliant and safe. The 2024 revision brings. Browse our selection of high-quality distribution boxes and enclosures for your electrical applications. Atlantic Distributors offers its clients a vast variety of lighting products to accommodate their requirements. Most of Eskom's power stations generate electricity at about 22 000 volts (or 22 kV). Ensure that your products and equipments will function correctly after installation and receive the best experts' advice for sustainable operation. ion at individual municipalities. In the same timeframe, municipal electrical bylaws were replaced with SANS 10142, the national code of practice for the wiring of of the wiring code, SANS 10142. Several entities are allowed to issue blank CoC forms to contractors and registered persons; these.

## Installation of lighting distribution boxes in South Africa



Regulation No. R. 242 – 6 March 2009: Electrical Installation Regulations Which enacts several registrations and, under Annexure 1, The Certificate of Compliance (CoC)



At Atlantic Lighting & Electrical Distributors we host tools and equipment for all major industries.



We provide the installation or its supervision and complete functionality of the provided products and equipment from the start. We ensure your performance and design using on-site testing & ...



Local authorities have strict requirements regarding the type and size of distribution board that must be used for the electrics & lighting. They are usually located in the kitchen or in the garage, but they ...

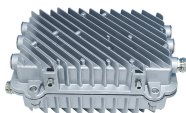
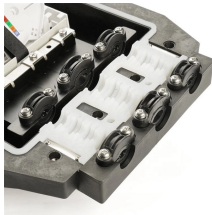


Table 4.1 contains a list of the applicable standards for the components that may be installed in an electrical installation. Information on national legislation that applies only in South ...



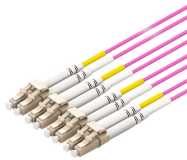
This specification covers City Power's requirements for pole-mounted service distribution boxes for public lighting in accordance with NRS 032 and other relevant standards.



Updated periodically by the South African Bureau of Standards (SABS), this document outlines the minimum safety and technical requirements for electrical installations.



No person may authorise, design, install or permit or require the installation of an electrical installation, other than in accordance with a health and safety standard incorporated into these Regulations ...



This guide will walk you through the critical standards, components, and installation rules you must follow to ensure your electrical installation is compliant and safe.



Browse our selection of high-quality distribution boxes and enclosures for your electrical applications. We offer a variety of sizes and materials to meet your specific needs, whether you require ...

## Contact Us

For more information, pricing, or custom network solutions, please contact us:

Website: <https://hashherbcafe.co.za>

Email: [hello@hashherbcafe.co.za](mailto:hello@hashherbcafe.co.za)

Phone: +27 63 814 7295

Address: 15 Galaxy Road, Linbro Business Park, Johannesburg, 2065, South Africa

This document is for informational purposes only. Specifications subject to change without notice.

