

## Installation of Corridor Distribution Box



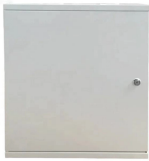
### Overview

This video shows real on-site footage of electrical installation, demonstrating safe and standardized wiring methods used by professionals. more Learn how to wire a distribution box step by step! These extras help make the box easier to install and maintain. You need to consider where it will be used, how much power it needs to handle, and how well it's built to last. Let's go through what matters most. First, think about the type. For information, address: Pacific Gas and Electric Company Technical Document Management Mail Code N9H P. Box 770000 San Francisco, CA 94177 Produced by Technical Document Management i2022 - 2023 Pacific Gas and Electric Company (PG&E) Electric and Gas Service Requirements (TD-7100M) Architects. Whether you are an electrical contractor or a construction brigade, knowing how to properly and safely install distribution boxes is the basis of ensuring the safe operation of the entire system. Whether it is residential buildings, commercial facilities or industrial sites, the.

## Installation of Corridor Distribution Box



Learn how to install a distribution box safely and correctly. Covers wiring, placement, standards, and expert tips for a compliant setup.



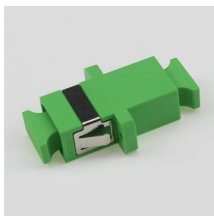
Learn how to wire a distribution box step by step! This video shows real on-site footage of electrical installation, demonstrating safe and standardized wiring methods used by professionals.



Before starting the installation, finding a proper place for putting the distribution box is crucial, because it largely decides the safety and convenience of maintenance. Let's see what factors ...



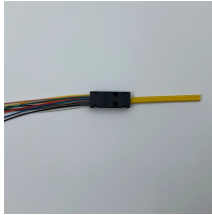
Our Christy range of concrete enclosures, lids and accessories provides robust, durable utility access in deliberate traffic environments and high-impact applications.



This article provides a detailed overview of the entire process of installing a distribution box, from pre-installation preparation to post-installation maintenance, and summarizes common ...



"Getting your distribution box installation right isn't just about passing inspection - it's about sleeping soundly knowing you've eliminated hidden fire hazards that could put your family at risk," explains ...



Proper installation of a distribution box requires careful planning and adherence to electrical codes. While major installations should always involve qualified electricians, understanding ...



Install a distribution box at 4.5 to 5.5 feet high for safety, accessibility, and compliance. This height ensures easy use and protection from hazards.



Installing a UKK distribution box on a corridor wall requires a blend of spatial planning and technical precision. Whether you are managing complex wiring in a commercial building or a ...



These requirements apply as long as applicants complete the approved projects within 18 months.

## Contact Us

For more information, pricing, or custom network solutions, please contact us:

Website: <https://hashherbcafe.co.za>

Email: [hello@hashherbcafe.co.za](mailto:hello@hashherbcafe.co.za)

Phone: +27 63 814 7295

Address: 15 Galaxy Road, Linbro Business Park, Johannesburg, 2065, South Africa

This document is for informational purposes only. Specifications subject to change without notice.

