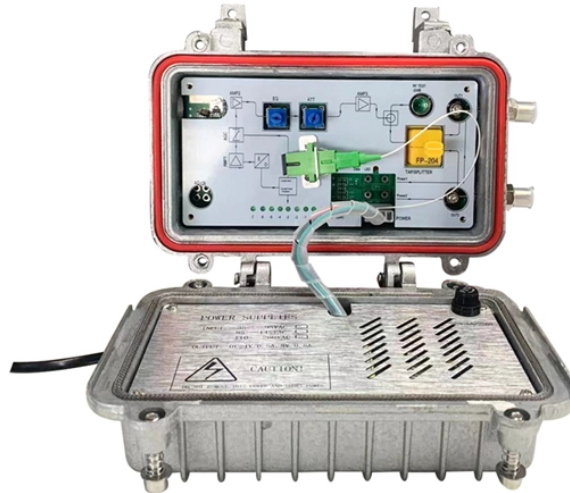


Installation method of optical cable reel

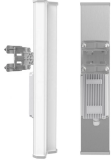


Overview

2 OFS fiber optic cable can be placed using either the moving reel or stationary reel method. The choice depends on vehicle access to the pole line, the type of equipment available to the installer, and whether the cable must be pulled into position over existing. 1. 01 This procedure provides general information for the installation of Prysmian fiber optic cables in direct buried applications. <p>Every time I help a small ISP plan their first fiber buildout, the question always comes up: should we bury it or string it on poles?

CAUTION: Before starting any cable installation, all personnel must be thoroughly familiar with all applicable Occupational Safety and Health Act (OSHA) regulations, the National Electric Safety Code (NEC), state and local regulations, and company practices and policies. The plastic foil wrap must remain in place until cable placement.

Installation method of optical cable reel



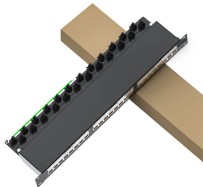
The bending radius of optical cable during laying process should be effectively guaranteed to avoid “gold hooks” and avoid too much tension, abrasion and too many times of twists and turns.



1.2 OFS fiber optic cable can be placed using either the moving reel or stationary reel method. The choice depends on vehicle access to the pole line, the type of equipment available to the installer, ...



Underground vs aerial fiber optic cable installation compared. Costs, durability, maintenance requirements, and guidance on choosing the right method.



Insert the crank handle into the side of the reel and wind the cable onto the reel. Note: If equipped with the spring rewind or cable guide options, see special instructions below.



However, many fibre deployment problems occur because teams use poor installation practices or overly complex termination methods. For this reason, many contractors and network operators now ...



1.0 GENERAL 1.01 This procedure provides general information for the installation of Prysmian fiber optic cables in direct buried applications. The methods described are intended for guideline use only, ...



Before the installation begins, carefully inspect the cable reel for protrusions such as nails and broken flanges which might cause damage to the cable as it is unreeled.



Attach the pulling line to the fiber optic cable and position the reel in the same manner as for an end pull. The pull manhole setup and the feed manhole setup are the same as they were for an end pull.



This document provides guidelines for installing figure 8 cable in an aerial facility. It discusses general safety precautions, references other documents, and describes two methods for cable installation - ...



All optical fiber cables must be tested while on the reel, prior to deployment. Installing cable is a time-consuming and expensive process so it is important to ensure the cable is good before installation.

Contact Us

For more information, pricing, or custom network solutions, please contact us:

Website: <https://hashherbcafe.co.za>

Email: hello@hashherbcafe.co.za

Phone: +27 63 814 7295

Address: 15 Galaxy Road, Linbro Business Park, Johannesburg, 2065, South Africa

This document is for informational purposes only. Specifications subject to change without notice.

