

# **Inspection Standards for Factory Distribution Boxes**



## Inspection Standards for Factory Distribution Boxes



In all packaging manufacturing facilities audited against this standard, the expectations related to hazard and risk assessments (i.e., Section B of this audit standard) apply.



The document provides a 16 item checklist for inspecting a main distribution board or panel board.



63: Parameters for air interface communications at 860 MHz to 960 MHz Type C ISO 18616-2, Transport packaging — Reusable, rigid plastics distribution boxes — Part 2: General specifications for testing



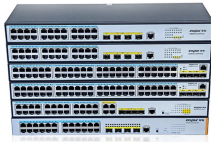
Learn about packaging inspection, its importance, standards, and best practices to ensure product quality and compliance in manufacturing.



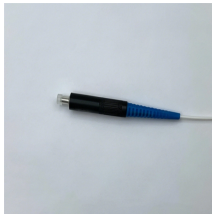
Today, we'll break down exactly what separates the best from the rest. Forget cookie-cutter checklists - we're talking about the real, practical inspection points that determine whether a distribution box will ...



The document provides a 16 item checklist for inspecting a main ...



These standards guide the inspection process and set the benchmarks for quality. Detailed checklists covering all aspects of packaging, including materials, sealing, labeling, and ...



State Plans are required to have standards and enforcement programs that are at least as effective as OSHA's and may have different or more stringent requirements.



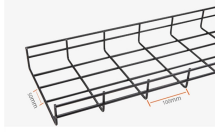
Use rag or brush, as needed Drying and storage Instructions to perform at least a visual inspection after every cleaning Cleaning procedures must be specific



Train yourself by downloading the SQF Food Safety Code for Storage and Distribution from the SQFI website (sqfi ) free of charge, and read how to apply it to your industry sector.



Based on the type of packaging being inspected, utilize the Quality Inspection Criteria outlined below for a list of defects and the tolerances permitted. Examine each of the items in the sample batch and ...



Ensure top-notch quality with QCADVISOR's Boxes & Cartons inspection checklist & template. Simplify quality control and streamline your inspections today!

## Contact Us

For more information, pricing, or custom network solutions, please contact us:

Website: <https://hashherbcafe.co.za>

Email: [hello@hashherbcafe.co.za](mailto:hello@hashherbcafe.co.za)

Phone: +27 63 814 7295

Address: 15 Galaxy Road, Linbro Business Park, Johannesburg, 2065, South Africa

This document is for informational purposes only. Specifications subject to change without notice.

