

Industrial switch with 4 ports and 24V



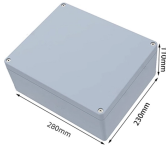
Industrial switch with 4 ports and 24V



Each port can deliver up to 95 watts of power. In addition, the switch has 4 10G SFP+ ports, all housed in a 19-inch 1U rack-mount case. With its 10Gbps uplink, ...



Industrial Ethernet 4 Port unmanaged switch. Galvanically Isolated Ethernet Ports capable of 10/100 Mbps. Industrial temperature range of -40°C to +80°C (-40°F to 176°F) and dual input redundant ...



Compact 4 port unmanaged switch. Galvanically Isolated Ethernet Ports. Automatic detection of data transmission speed: 10/100/1000 Mbps. with wide voltage range means it can be powered from USB ...



FS Industrial Ethernet Switches with robust design for harsh industrial and outdoor environments subject to vibrations, shocks and extreme temperature fluctuations from -40°C to 75°C generally.



Industrial temperature range of -40°C to +80°C (-40°F to 176°F) ...



Apply this managed switch for harsh industrial applications that require accurate control, high level security for data switching as well as real-time data monitoring from remote end, achieving effective ...



CPS-24V-POE4 - 4-port Ethernet switch / hub - class 3 with Power-over-Ethernet (PoE) - COGNEX - Supply voltage 12-36Vdc (12Vdc / 24Vdc nom.) - DIN rail mounting



These switches provide resilient outdoor connectivity, facilitating uninterrupted power and data transmission to PoE PDs, including outdoor IP cameras, wireless access points, and diverse outdoor ...



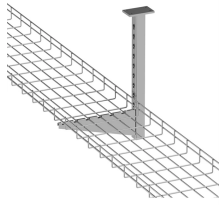
Industrial temperature range of -40°C to +80°C (-40°F to 176°F) and dual input redundant power supply with wide voltage range means it can be powered from USB or on the 24V factory floor.



Industrial Ethernet 4 Port unmanaged switch. Galvanically Isolated Ethernet Ports capable of 10/100 Mbps. Industrial temperature range of -40°C to +80°C (-40°F to 176°F) and dual input redundant ...



Each port can deliver up to 95 watts of power. In addition, the switch has 4 10G SFP+ ports, all housed in a 19-inch 1U rack-mount case. With its 10Gbps uplink, this switch can handle extremely large ...



Discover reliable 24V PoE switches for networking. Find industrial-grade options with multiple ports and DIN-rail mounting for your installation needs.

Contact Us

For more information, pricing, or custom network solutions, please contact us:

Website: <https://hashherbcafe.co.za>

Email: hello@hashherbcafe.co.za

Phone: +27 63 814 7295

Address: 15 Galaxy Road, Linbro Business Park, Johannesburg, 2065, South Africa

This document is for informational purposes only. Specifications subject to change without notice.

