

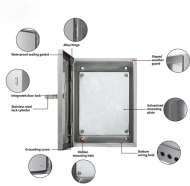
## Industrial Switch Layer 2 Ring Network Planning



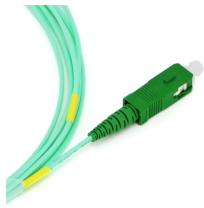
## Industrial Switch Layer 2 Ring Network Planning



This document outlines the recommended parameters of a layer 2 network comprising two levels of interconnecting rings. As shown in Figure 1, a central, "main" ring is built using RUGGEDCOM switch ...



With STP/RSTP/MSTP, ERPS and 3onedata's proprietary ring technology, SW-Ring, the L2 industrial Ethernet switches can greatly enhance the network redundancy. IEEE 802.1Q VLAN ...



The Ethernet Ring Protection Switching (ERPS) protocol is a powerful technology and service that can be used on industrial switches to ensure high network availability and prevent network downtime.



The EDS-408A Series is designed especially for industrial applications. The switches support a variety of useful management functions, such as Turbo Ring, Turbo Chain, ring coupling, IGMP snooping, ...



IES-2042PA provides the setting ability of Web-GUI and Windows Utility and also supports the simple DIP-Switch setting function which offers great flexibility to set up the Ring. With it's rigid IP-30 ...



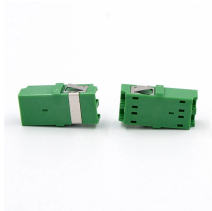
By using ERPS Rings solutions, organizations can achieve high network availability, protect network traffic, and simplify network management. For more information, contact our ...



This solution builds a basic two-layer network architecture designed to decrease complexity, enhance security, and increase efficiency and operating uptime for your industrial network.



Learn the recipe for designing, implementing and maintaining a truly robust and resilient industrial network with this white paper. Strengthen your network with Westermo managed layer 2 industrial ...



Device Level Ring (DLR) is a Layer 2 protocol that enables redundancy in a ring topology, providing fast network fault detection and reconfiguration for industrial networks.

## Contact Us

For more information, pricing, or custom network solutions, please contact us:

Website: <https://hashherbcafe.co.za>

Email: [hello@hashherbcafe.co.za](mailto:hello@hashherbcafe.co.za)

Phone: +27 63 814 7295

Address: 15 Galaxy Road, Linbro Business Park, Johannesburg, 2065, South Africa

This document is for informational purposes only. Specifications subject to change without notice.

