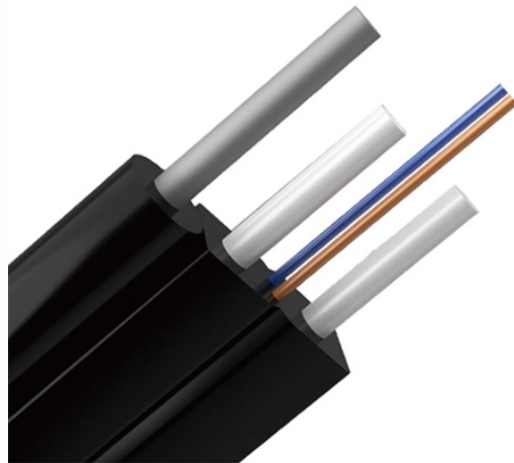
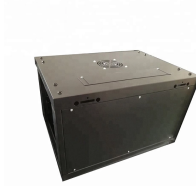


Industrial Rail Switch PoE



Industrial Rail Switch PoE



Features TRENDnet's 6-Port Industrial 2.5G PoE++ DIN-Rail Switch with 10G Ports, model TI-BG50611, delivers network connectivity to rugged environments, while saving you on installation costs and ...



Industrial 10-Port Gigabit PoE+ Switch with 8 Gigabit Ethernet Ports and 2 SFP Uplinks 240 W PoE Power Budget, IEEE 802.3at/af (PoE+/PoE) Compliant, IP30-Rated Metal Housing, Redundant ...



When connecting network devices, the switch will detect whether they are POE-compatible and automatically supply power. Using a PoE Switch saves on installation and maintenance costs by ...



FS PoE industrial switches support 60W PoE++, delivering reliable power and data for surveillance, IoT, automation, and smart city applications in demanding environments.



Housed in ruggedized DIN rail or wall-mountable enclosures, this Ethernet switch is designed for harsh environments, such as industrial networking and intelligent transportation systems (ITS), as well as ...



5-Port Industrial Gigabit PoE++ Powered DIN-Rail Switch with PoE Pass-Through TI-B541 (Version v1.1R) MORE INFO FIND RETAILERS Add to cart



This paper explains the basics of PoE, explores how the industrial sector can benefit from PoE technology, and describes the PoE capabilities that Cisco ® industrial switches offer and the ...



MokerLink industrial poe switches are designed with wide temperature support to ensure operation reliability in extreme temperatures ranging from -40°C to +75°C.



Our Industrial Ethernet Switch portfolio comprises Managed and Unmanaged Switches with Gigabit, PoE, IEC 61850 certification, and for DIN rail mounting.



Keep your industrial operations running smoothly with secure, compact, Power over Ethernet (PoE)-enabled, and easy-to-manage Industrial Ethernet 1000 Series DIN-rail switches. Get reliable, secure ...

Contact Us

For more information, pricing, or custom network solutions, please contact us:

Website: <https://hashherbcafe.co.za>

Email: hello@hashherbcafe.co.za

Phone: +27 63 814 7295

Address: 15 Galaxy Road, Linbro Business Park, Johannesburg, 2065, South Africa

This document is for informational purposes only. Specifications subject to change without notice.

