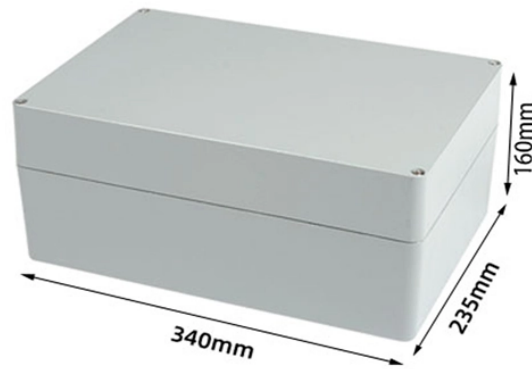


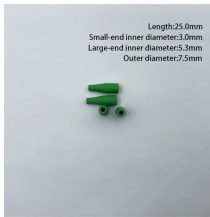
Inductor-adjustable attenuator



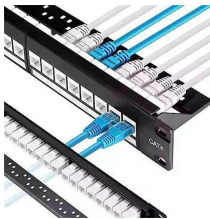
Inductor-adjustable attenuator



Built to handle high power and harsh environments, our attenuators help prevent overload, reduce reflections, and maintain system performance without compromise.



We offer a robust portfolio of in-stock, adjustable RF attenuators and phase shifters for multiple applications, including test instrumentation, cellular communication, wireless communications, ...



From the key functional perspective, attenuators can be classified as fixed attenuators with an unchanging level of attenuation and variable attenuators with an adjustable level of attenuation.



Variable RF attenuators reduce signal strength while preserving signal integrity, making them crucial in RF testing and system protection. They provide adjustable attenuation to control power levels in ...



ACST 536x Adjustable Attenuators are precision-engineered waveguide components that provide accurate, repeatable control of signal power from 50 GHz to 500 GHz.



RF Attenuators from multiple manufacturers are listed on everything RF. You can search by specification using our parametric search tool, download datasheets and get quotations.



An inductor is a passive two-terminal electrical component that stores energy in a magnetic field when electric current flows through it. Adjustable inductors use a movable core to modify the electric field ...



Mini-Circuits is a global leader in the design and manufacturing of RF, IF, and microwave components from DC to 86GHz.



Usually it could be divided into two types: fixed rf attenuators and adjustable rf attenuators. The attenuation value of a fixed attenuator is fixed. The adjustable rf attenuator, variable rf attenuator can ...



Description: Whether you are using the pushbutton attenuator on your RF test bench or mounting it to a panel, the JFW pushbutton attenuator makes adjusting attenuation quick and easy.

Contact Us

For more information, pricing, or custom network solutions, please contact us:

Website: <https://hashherbcafe.co.za>

Email: hello@hashherbcafe.co.za

Phone: +27 63 814 7295

Address: 15 Galaxy Road, Linbro Business Park, Johannesburg, 2065, South Africa

This document is for informational purposes only. Specifications subject to change without notice.

