

Iceland OLT Optical Line Terminal 400G



Iceland OLT Optical Line Terminal 400G



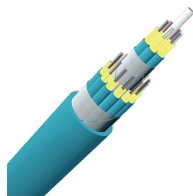
The ISCOM6860 is a high-density carrier-grade Optical Line Terminal (OLT) platform. It offers EPON, 10G EPON, GPON, XGS-PON and leased line access, as well as multi-service aggregation capabilities.



This guide covers all you need to know about 400G, the technology that supports it, and how it is being used in the marketplace.



Deploy Cisco NCS1K-OLT-C 1010 Optical Line Terminal with 400G line rate and 2x QSFP-DD for scalable C-band DWDM transport. Ensure high-capacity backbone and simple integration.



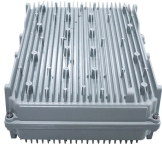
cOS™ Pier Optical Line Terminal Pier is a compact, powerful connectivity device for enabling fiber-to-the-x (FTTx) broadband services across extended distances.



Overview This section lists the hardware platforms and optical modules that enable Routed Optical Networking. It covers supported routers, coherent pluggables, optical line systems, passive ...



A gigabit passive optical network (G-PON) comprises optical line terminals (OLTs) and optical network units (ONUs), and Murata's lineup of products for use in OLTs is introduced here.



An optical line termination (OLT), also called an optical line terminal, is a device which serves as the service provider endpoint of a passive optical network.



Explore our range of high-quality GPON, EPON, and XG (S)PON OLT products. Find the perfect Optical Line Terminal solutions for your network needs.



Our Optical Line Terminal (OLT) equipment is one of today's most suitable and scalable solutions, offering Network Operators and Service Providers a flexible, customizable, and cost-effective ...



A look at the market for network optical line termination (OLT) equipment and some of the products and solutions available.

Contact Us

For more information, pricing, or custom network solutions, please contact us:

Website: <https://hashherbcafe.co.za>

Email: hello@hashherbcafe.co.za

Phone: +27 63 814 7295

Address: 15 Galaxy Road, Linbro Business Park, Johannesburg, 2065, South Africa

This document is for informational purposes only. Specifications subject to change without notice.

