

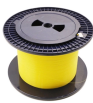
## Huijue Network Patch Panel Wiring Sequence



## Huijue Network Patch Panel Wiring Sequence



Guide to wiring Ethernet patch panels for networks. Tips on setup, wiring order, and best practices.



In an Ethernet patch panel diagram, each port on the patch panel is represented by a numbered or labeled square or circle. The diagram typically includes details such as the port numbers, cable ...



Learn how to wire a Cat5e patch cable with a detailed diagram. Understand the color codes and connections to create a reliable network connection.



The document provides instructions for connecting network devices in a patch panel board. It includes: 1) A diagram showing how a modem, router, access point, and two computers are connected to a ...



By following this step-by-step guide, you will be able to wire your Cat 5e cable properly and ensure a reliable network connection. Remember to double-check your work and test each cable before ...



Unless you have a customer dictating which one to use, then T568A versus T568B comes down to personal preference. From a practical standpoint, both T568A and T568B wiring ...



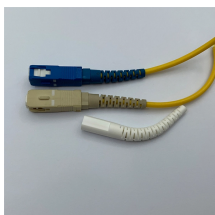
Check The PanelStrip The CableSpread Out The WiresSet The Wires in The PanelPunch and CutTest...Test...TestThe patch panel has 110 connectors on it already. It's primed for the individual wires to be placed and secured. You're going to want to set your cable wires in the appropriate individual slots. To make sure you're doing this correctly, you want to follow a colored cable guide. Your punch-down tool kit should include a colored guide. The patch pane...See more on cablesandkits wiremystique



The following sequence outlines the authoritative procedure for terminating network cables onto an Ethernet patch panel, ensuring adherence to industry best practices and standards.



This article explains the Cat5e patch panel wiring basics (T568A/T568B), required tools and materials, and step-by-step termination, including a patch panel wiring diagram reference.



Using the supplied mounting screws and washers, mount the patch panel to the desired position of a 19" relay rack. En se servant des vis et des rondelles de montage fournies, installer le panneau de ...



Learn the step-by-step network patch panel and keystone jack wiring methods, including essential tools, T568A/B wiring sequences, and tool-free installation tips. This guide covers everything you need for ...

## Contact Us

For more information, pricing, or custom network solutions, please contact us:

Website: <https://hashherbcafe.co.za>

Email: [hello@hashherbcafe.co.za](mailto:hello@hashherbcafe.co.za)

Phone: +27 63 814 7295

Address: 15 Galaxy Road, Linbro Business Park, Johannesburg, 2065, South Africa

This document is for informational purposes only. Specifications subject to change without notice.

