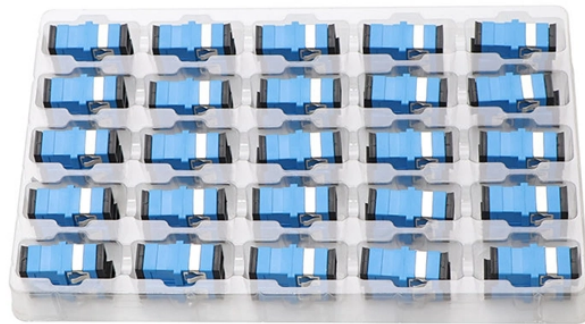


# Huijue Broccoke 300 Fiber Optic Switch



## Huijue Broccoke 300 Fiber Optic Switch



A device designed for re-routing signals from one optical source into others, or to change the logic state of another device, through light activation, electro-mechanical, photo-electric or analog ...



The Brocade 300 SAN Switch is a 1U, cost-effective and highly-scalable 1, 2, 4, or 8 Gbps switch for small to mid-sized businesses. It can function as a full switch or NPIV access gateway. It has 24 ...



Our Ethernet network switches with fiber ports comes in managed or unmanaged formats combined with both Industrial and Commercial grades. Utilize our PoE switches to power your Ethernet devices ...



View online or download Brocade communications systems Brocade 300 Reference Manual, Administrator's Manual, Release Notes, Quick Start Manual.



As a leading Fiber Optical Components manufacturer and supplier, Huijue has been providing customers with the best and most suitable products and solutions. Our headquartered in Shanghai, it ...



We lead the industry in optical switch technology, delivering the lowest insertion loss (0.2 dB), fastest switching speed (10 ns), broadest wavelength range (300–2400 nm), widest fiber compatibility, ...



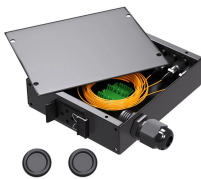
View online (82 pages) or download PDF (1 MB) Brocade Communications Systems 300 User manual & bull; 300 network switches PDF manual download and more Brocade Communications Systems ...



Shop DigiKey's large in-stock selection of Fiber Optic Switches, Multiplexers, Demultiplexers. View inventory, pricing and order now for same day shipping!



Offers dual functionality as either a full-fabric SAN switch or as an NPIV-enabled Brocade Access Gateway that simplifies server connectivity in heterogeneous enterprise fabrics



The Brocade 300 is an 8 Gbps Fibre Channel switch that provides an affordable entry-level solution for small SANs or the edge of larger SANs. It enables small to medium-sized enterprises to simplify their ...

## Contact Us

For more information, pricing, or custom network solutions, please contact us:

Website: <https://hashherbcafe.co.za>

Email: [hello@hashherbcafe.co.za](mailto:hello@hashherbcafe.co.za)

Phone: +27 63 814 7295

Address: 15 Galaxy Road, Linbro Business Park, Johannesburg, 2065, South Africa

This document is for informational purposes only. Specifications subject to change without notice.

