

## Huawei switch access to 10 Gigabit interface



## Huawei switch access to 10 Gigabit interface



This text is a guide detailing Basic Command Line Interface (CLI) Commands on Huawei brand switches. It provides step-by-step instructions for users to perform fundamental network configuration ...



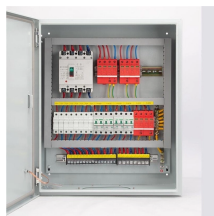
Huawei S6720-SI series switches are Huawei-developed next-generation multigigabit 10GE fixed switches. The S6720-SI can provide high-speed wireless access, and access for 10GE servers in ...



The Huawei S6730-H Switch series answers with high-density 10 GE access, robust Layer-3 capabilities, VXLAN virtualization, and intelligent O& M. Positioned perfectly as an ...



Product Overview S6300 switches (S6300 for short) are next-generation box-shaped 10-gigabit switches developed by Huawei for accessing 10-gigabit servers in a data center and converging devices on a ...



Configuring a Huawei switch to assign an IP address to VLAN 1 and binding multiple ports to it can seem challenging, but this step-by-step guide simplifies the process.



Huawei S6720-HI is the first fixed agile switch with 10GE downlink and 40GE/100GE uplink ports. It supports in-depth wired and wireless convergence and unified management on devices, users, and ...



The port split function on Huawei switches allows a physical high-bandwidth port (e.g. 40Gbps) to be split into multiple independent low-bandwidth ports (e.g. 10Gbps), giving more ...



Examine the configuration of the switch, including interfaces, security settings, ARP-related configurations, and access controls. Ensure they align with best practices and security ...



Ports of the S6700 support 1GE access and 10GE access and can identify optical module types, minimizing the return on investment and allowing users to deploy service flexibly.



Huawei eKitEngine S620-24T16X8Y2CZ is an enhanced fully-managed 10GE switch designed for the small and medium-sized business (SMB) market. It provides a variety of ports, such as GE electrical, ...



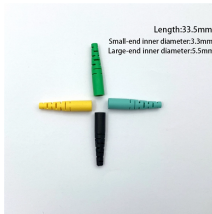
Huawei S6320-SI series switches are Huawei-developed next-generation multigigabit 10GE fixed switches. The S6320-SI can provide high-speed wireless access, and ...



Huawei's 10 megabyte access network switch is equipped with down line 10G SFP+ port, which is mainly connected to the access of the ten thousand ...



Huawei's 10 megabyte access network switch is equipped with down line 10G SFP+ port, which is mainly connected to the access of the ten thousand megabyte server, while the 40G QSFP+ ...



In addition, Huawei Multi-Gigabit Ethernet switches are compatible with multiple IEEE 802.3 Ethernet standards and support Ethernet ports such as 100M/GE/2.5GE/5GE/10GE Base-T ...



This article describes in a simple step-by-step guide how to configure and activate SSH on a Huawei device (switch, router, WLAN controller, etc.).

## Contact Us

For more information, pricing, or custom network solutions, please contact us:

Website: <https://hashherbcafe.co.za>

Email: [hello@hashherbcafe.co.za](mailto:hello@hashherbcafe.co.za)

Phone: +27 63 814 7295

Address: 15 Galaxy Road, Linbro Business Park, Johannesburg, 2065, South Africa

This document is for informational purposes only. Specifications subject to change without notice.

