

Huawei Core Switch Optical Module



Overview

Huawei S series devices support optical modules of the following encapsulation types: CFP, QSFP+, QSFP28, XFP, SFP, eSFP, and SFP+. All optical modules are hot swappable. eSFP: Are Attenuators Required in the Case of Short-Distance Connection Using Single-Mode Optical Modules?

Why an Interface Does Not Enter the linkdown State When Its Receiving Power Reaches the Lower Threshold?

Does a Port Frequently Alternate Between Up and Down States When a Non-Huawei-Certified. This article summarizes several solutions for using optical modules with switches and common problems encountered during usage, along with specific solutions. Huawei S5720-32P-EI-AC Switch II. How to Configure Optical Ports on Huawei S5720-32P-EI-AC Switch?

Problem: All optical ports cannot be. Huawei's StarryLink optical modules offer customers ultra-reliable, long-distance, and highly secure data center network interconnection experiences. The short-distance optical return loss

positioning technology enables precise and efficient identification of contaminated or loose optical modules. HUAWEI TECHNOLOGIES CO. Copyright © Huawei Technologies Co. All other trademarks and trade names mentioned in this document are the property of their respective holders. During use, reading optical module information helps understand its real-time operating status, enabling faster troubleshooting of link abnormalities. The following uses the. In the switching field, HUAWEI has accumulated a large number of industry-leading intellectual property rights and patents, can provide hundreds of switch products from core to access.

Huawei Core Switch Optical Module



A switch must use optical or copper modules that have been certified for use on Huawei switches. Non-certified optical or copper modules cannot ensure transmission reliability and may affect service ...



Huawei's StarryLink optical modules for data center networks offer seamless interconnection from GE to 800GE across all scenarios, delivering customers an ultra-reliable, long-distance, and highly secure ...



In the switching field, HUAWEI has accumulated a large number of industry-leading intellectual property rights and patents, can provide hundreds of switch products from core to access. HUAWEI S5700 ...



This article summarizes several solutions for using optical modules with switches and common problems encountered during usage, along with specific solutions.



To determine whether optical modules delivered for Huawei switches before July 1, 2013 are certified ones, contact Huawei technical support. If your optical modules are delivered after July 1, 2013, use ...



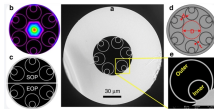
A switch must use optical or copper modules that have been certified for use on Huawei S switches. Non-certified optical or copper modules cannot ensure transmission reliability and may affect service ...



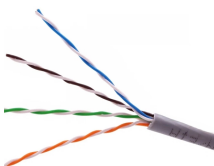
The S6720-LI series, a new generation of Huawei's compact all-10G box switches, is designed for use in campus networks and data center 10G access. The S6720-LI series switch ...



SFP Stack Optical Modules 2.5GE eSFP Optical Modules 10GE SFP+ Optical Modules 10GE SFP+ Copper Modules 10GE-CWDM SFP+ Optical Modules 10GE-DWDM SFP+ Optical ...



Optical modules are widely used in switches, network interface cards (NICs), routers, and other communication devices. During use, reading optical module information helps understand its real ...



If the label has a Huawei logo, the optical module has been certified for Huawei data center switches. If the label does not have a Huawei logo, run the display interface transceiver verbose command on ...

Contact Us

For more information, pricing, or custom network solutions, please contact us:

Website: <https://hashherbcafe.co.za>

Email: hello@hashherbcafe.co.za

Phone: +27 63 814 7295

Address: 15 Galaxy Road, Linbro Business Park, Johannesburg, 2065, South Africa

This document is for informational purposes only. Specifications subject to change without notice.

