

## How to wire the main switch of the distribution box



### Overview

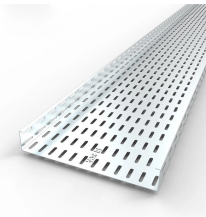
In the following tutorial, we will show how to wire 120V single-phase and 240V split-phase circuit breakers and loads inside a residential main panel. A distribution board or distribution box is where the main power supply is distributed to multiple loads. And all the switching and protective devices are installed in the distribution box. The primary side of the distribution transformer is supplied by two conductors. An electrical panel box, also known as a breaker box or a distribution board, is a crucial component of any electrical system.



## How to wire the main switch of the distribution box



Hey, in this article we are going to see the Single Phase Distribution Box Wiring Diagram and Connection Procedure. A distribution board or distribution box is where the main power supply is ...



Master the safest and most efficient circuit breaker wiring configurations. Learn about single-phase vs. three-phase setups, safety standards, and future-proof electrical ...



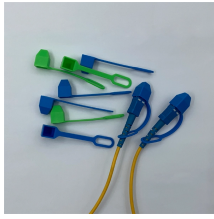
These three wires enter the meter box and then connect to the main panel. In the following tutorial, we will show how to wire 120V single-phase and 240V split-phase circuit breakers and loads inside a ...



Master the safest and most efficient circuit breaker wiring configurations. Learn about single-phase vs. three-phase setups, safety standards, and future-proof electrical planning.



Learn how to wire a single phase breaker box with a wiring diagram. Understand the different components and connections involved in setting up a safe and efficient electrical system. Get step-by ...



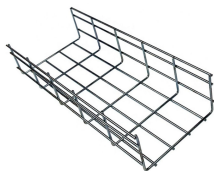
Technical Guide on How to Wire the Main Circuit Breaker Panel. See the step you need to follow for Breaker Box Wiring or Service Panel Wiring.



Find out how to properly wire an electrical panel box with a comprehensive diagram and step-by-step instructions.



Wiring a main breaker panel can seem like a daunting task, but it doesn't have to be. If done right, it's a simple process that any do-it-yourself enthusiast can do.



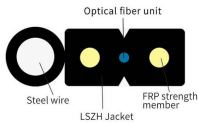
Wiring Direction: Wiring between the main circuit breaker and each branch circuit breaker in the box generally goes on the left, and the wiring out of the distribution box generally goes on the ...



Inside Main Breaker Box  
How to Wire 120V Circuits & Breakers  
How to Wire 240V Circuits & Breakers  
Wiring Color Codes  
Safety Precautions  
The following tutorial shows how to wire 120V single phase breaker box installation in home. 120V single phase circuits are generally used in home wiring for lighting circuits and outlet receptacles. To do so, simply mount and connect a single pole (15A or 20A) circuit breaker to any of the hot busbar (out of hot 1 or hot 2) with the help of metal ... See more on electrical technology wiring master



Learn how to read and understand wiring diagrams for breaker boxes to ensure proper electrical configurations and safety measures.



In this video, we'll walk you through the process of wiring a home distribution box with a detailed connection diagram.

## Contact Us

For more information, pricing, or custom network solutions, please contact us:

Website: <https://hashherbcafe.co.za>

Email: [hello@hashherbcafe.co.za](mailto:hello@hashherbcafe.co.za)

Phone: +27 63 814 7295

Address: 15 Galaxy Road, Linbro Business Park, Johannesburg, 2065, South Africa

This document is for informational purposes only. Specifications subject to change without notice.

