

How to weld cable heads in a distribution box



How to weld cable heads in a distribution box



Care must be given to the run lengths, number of cable turns, and cable sheave size to ensure the cable's maximum pulling tension, minimum bending radius, and maximum allowable sidewall ...



The small dimensions of the OW 19 welding head make it ideal for applications where space is very limited, as is often the case in the semiconductor, air and aerospace, pharmaceutical and ultra pure ...



There are several effective welding techniques that a welder can use to achieve optimal results when constructing utility cable supports. The most common techniques include:



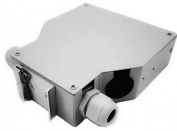
Electric enclosure distribution box welding machine automatic design. High efficiency and easy operation steel enclosure welding process. Electrical distribution box making machine...



NA-5S HEAD - Includes wire feed head with straightener for solid wire, flux hopper with automatic valve and head mounting. Also includes electrode cables from the control box to wire contact assembly, ...



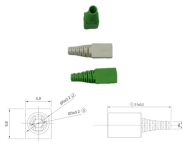
Electrical Cabinet Welding Video This video show how to welding #electricalcabinet, electrical enclosure box, #outdoorenclosure.



Cable tray welding is a critical process for assembling secure and durable cable tray systems. Whether for industrial or commercial applications, the steps and techniques involved ensure safety, stability, ...



Joining round tube box section can be a little bit tricky from trying to get it to stay straight in this fabrication and welding episode today, you will learn how to tig weld box section...



The internal parts and opening edges of the distribution box shall be flat and smooth without burrs and cracks. The movable parts of the distribution box can be opened and closed flexibly.



Cadweld connections weld the conductors and the structure to be protected so no galvanic corrosion can occur at the interface. The Cadweld process is specifically formulated to provide minimum heat ...



Connect work cable to the work as close to the welding area as practical to prevent welding current from traveling long, possibly unknown paths and causing electric shock, sparks, and fire hazards.

Contact Us

For more information, pricing, or custom network solutions, please contact us:

Website: <https://hashherbcafe.co.za>

Email: hello@hashherbcafe.co.za

Phone: +27 63 814 7295

Address: 15 Galaxy Road, Linbro Business Park, Johannesburg, 2065, South Africa

This document is for informational purposes only. Specifications subject to change without notice.

