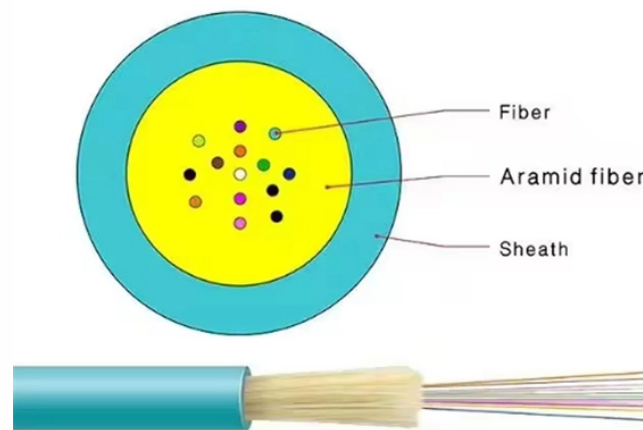


How to use a router when the fiber optic cable is out of power



Overview

The key is to connect both your ONT and router to the same backup circuit, ensuring your network stays live end-to-end instead of dropping halfway through an outage. This is why having a storm preparedness internet plan is essential if you live in an area with frequent outages. Think of your ONT as the. And the answer is yes. Your router and ONT (the fiber version of a modem) are plugged into an electrical outlet in your wall. How does backup power keep a fiber-optic internet connection online?

When a recent storm knocked out Steve Thatcher's power. During power outages, the internet connection often remains available — you just need to supply power to your Wi-Fi router and the fiber terminal from your internet provider. That's why setups like router powered by a power bank have become increasingly popular in outage-prone regions. Don't add high-draw stuff “just because it fits.

How to use a router when the fiber optic cable is out of power



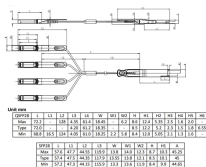
If your power goes out, keeping the internet up can mean staying on top of alerts, checking outage maps, or just letting family know you're okay. This guide shows a practical setup (no ...



Unlike traditional cable internet, which relies on electricity at many points in the field, a fiber-optic network does not require electricity in the field to operate. With battery backup at home for ...



If you have a use for something, you need it or can find something to do with it.



From fiber ONT battery backup to portable power stations, here's how to protect your WiFi, keep WiFi on during outage situations, and get storm-ready for reliable power outage home internet access.



Learn to stay connected during blackouts, storms and more. When the power goes out — whether it's severe weather, a transformer malfunction or even ...



Learn to stay connected during blackouts, storms and more. When the power goes out — whether it's severe weather, a transformer malfunction or even a wayward squirrel — your internet ...



If you have fiber internet, your connection relies on an optical network terminal (ONT) in addition to the router. To keep fiber internet running during a power outage, provide power to the ...



But how exactly are you supposed to keep your home broadband going when the power is out? It's easier than you think! First, Is Your ISP Ready? You'll need backup power for your home ...



Today, we'll walk through how fiber internet handles power outages, what equipment you need to stay online, and how to set up backup internet for your home so you can stay connected ...



She quickly used up (all of) her inheritance. Don't shower too long and use up (all) the hot water.



That's why setups like router powered by a power bank have become increasingly popular in outage-prone regions. Below is a simple and proven way to power a router during a power outage, without ...



to come (also fall, go, etc.) into use: to be introduced into customary or habitual employment or practice; to begin to be used; esp. (of vocabulary, syntax, etc.) to be introduced into common usage.



Use can be both a verb and a noun, while usage can only function as a noun. Use has a wide range of definitions, as either a verb or a noun.



Whether the cause is severe weather or a blown circuit or whether your power is out for a few hours or a couple of days, here's how you can stay connected to the internet when you lose...



USE definition: 1. to put something such as a tool, skill, or building to a particular purpose: 2. to reduce the.... Learn more.



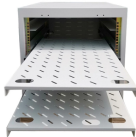
The meaning of USE is to put into action or service : avail oneself of : employ —often used with for; often followed by to + a verb. How to use use in a sentence.



The good news is, your internet service is likely still active; it's just your modem and router that have lost power. This guide will walk you through simple solutions, from small battery backups to powerful ...



As a noun use means "purpose." As a verb, use means either "put to work," or "work something until there isn't anything left," unless you use your friend, meaning you exploit her.



Explore the definition of the word "use," as well as its versatile usage, synonyms, examples, etymology, and more.

Contact Us

For more information, pricing, or custom network solutions, please contact us:

Website: <https://hashherbcafe.co.za>

Email: hello@hashherbcafe.co.za

Phone: +27 63 814 7295

Address: 15 Galaxy Road, Linbro Business Park, Johannesburg, 2065, South Africa

This document is for informational purposes only. Specifications subject to change without notice.

