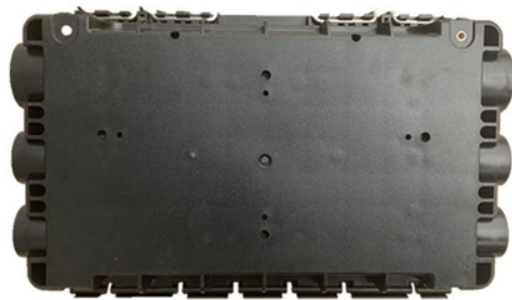


How to thicken fireproof cable trays



How to thicken fireproof cable trays



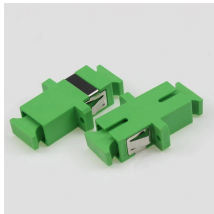
E. Secure the attachment strips to the top and bottom of the tray using 1/2" (13 mm) metal banding. The banding is drawn tight using a banding tool and secured with a retaining clamp at the side of the tray.



The proper coating and acceptance of fireproof cable trays are essential for long-term performance and safety. This guide explains the critical ...



Explore the importance of fire-resistant cable trays in high-risk environments. Learn about the best materials and practices to ensure maximum safety and performance in fire-sensitive areas.



RECOMMENDED USES: Fire protection of grouped electrical, control & communication cables, and their supporting trays.



Cable tray installation must comply with specific technical standards to ensure electrical safety, system reliability, and long-term maintainability. This document ...



For large openings, install a fire-resistant backing plate before sealing. Layout and positioning must be reasonable to facilitate installation and ...



The mostly combustible cable sheaths and insulation allow a fire to spread along the cable at rapid speed. Our tested solutions for cable fire protection can delay the spread of fire in order to minimise ...



For large openings, install a fire-resistant backing plate before sealing. Layout and positioning must be reasonable to facilitate installation and maintenance. Choose appropriate fire ...



Fill material to be injected in-between blocks and penetrants to the full depth of the blocks, as well as in any visible voids/ openings between blocks (Item 4A). In addition, foam shall be injected to the ...



Installation: FireMaster Cable Wrap shall be installed by a qualified contractor in strict accordance with Morgan Advanced Materials installation instructions and certification requirements.



When fitting cable trays and their accessories, the products are cut on site to create changes of direction, adjust sections, etc. Damage can also occur during handling; as a result, both the ...



Cable tray installation must comply with specific technical standards to ensure electrical safety, system reliability, and long-term maintainability. This document outlines the key requirements for cable tray ...



Our wind certification report provides you with list of acceptable B-Line series cable tray supports, fittings and covers based off of the environmental conditions, cable loading, and type of cable tray in your ...



Explore the importance of fire-resistant cable trays in high-risk environments. Learn about the best materials and practices to ...

Contact Us

For more information, pricing, or custom network solutions, please contact us:

Website: <https://hashherbcafe.co.za>

Email: hello@hashherbcafe.co.za

Phone: +27 63 814 7295

Address: 15 Galaxy Road, Linbro Business Park, Johannesburg, 2065, South Africa

This document is for informational purposes only. Specifications subject to change without notice.

