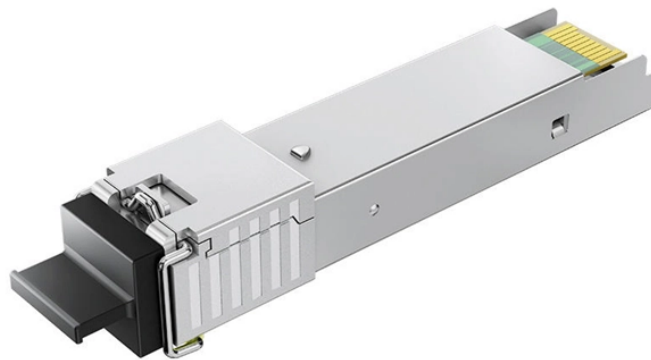


## How to remove and install the switch in the distribution box



### Overview

Use a screwdriver to remove the switch plate cover, then unscrew the switch from the electrical box. Disconnect the wires from the old switch and connect them to the new switch, following the manufacturer's instructions for proper placement. I. Hey, in this article we are going to see the Single Phase Distribution Box Wiring Diagram and Connection Procedure. A distribution board or distribution box is where the main power supply is distributed to multiple loads. Preparation WorkTools and Materials - **\*\*Tools\*\***: Screwdriver (crosshead/slothead), voltage tester, electrician's pliers, wire stripper, tape measure, marker.

## How to remove and install the switch in the distribution box



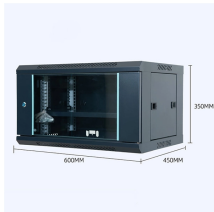
Learn how to install a distribution box safely and correctly. Covers wiring, placement, standards, and expert tips for a compliant setup.



If you are replacing an existing switch box, or installing a new one, this article will provide you with the steps needed to complete the job. The switch box is the nerve center of your electrical ...



Hey, in this article we are going to see the Single Phase Distribution Box Wiring Diagram and Connection Procedure. A distribution board or distribution box is where the main power supply is ...



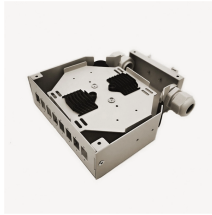
Replacing a very shallow electrical box. Previous owners added a heat fan switch and the box size no longer met code. I demonstrate full replacement with a deeper box.



Once all the wires are securely connected, carefully push the switch back into the electrical box and screw it in place. Finally, replace the cover plate and turn the power back on at the main electrical ...



First of all, you need to have a simple understanding of the definition of a distribution box, and make it clear which kind of distribution box you want to install. This is important to properly install it.



This article provides a detailed guide on how to wire a switch box correctly, including the different types of switches and their connections. Whether you are a beginner or an experienced DIYer, this wiring ...



METHOD STATEMENT FOR Electric panel and distribution box installation and termination - Free download as PDF File (.pdf), Text File (.txt) or read online for free. This document provides a method ...



Use a screwdriver to remove the switch plate cover, then unscrew the switch from the electrical box. Disconnect the wires from the old switch and connect them to the new switch, ...



- **\*\*Install the switch/socket\*\***: Align the wire terminals with the screw holes of the switch, tighten them to fix it, and ensure that the switch panel fits closely to the wall.

## Contact Us

For more information, pricing, or custom network solutions, please contact us:

Website: <https://hashherbcafe.co.za>

Email: [hello@hashherbcafe.co.za](mailto:hello@hashherbcafe.co.za)

Phone: +27 63 814 7295

Address: 15 Galaxy Road, Linbro Business Park, Johannesburg, 2065, South Africa

This document is for informational purposes only. Specifications subject to change without notice.

