

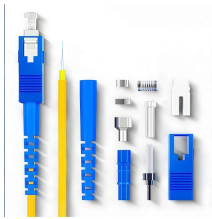
How to neatly wire the electrical distribution box in an apartment



How to neatly wire the electrical distribution box in an apartment



By selecting an appropriately sized box, grouping related wires, using quality connectors like wire nuts properly, bundling with cable ties, labeling carefully, routing along edges, and ...



Learn how an electrical circuit breaker panel is installed. Normally this is a job that should be attempted only by a licensed electrician.



Learn how to professionally wire and organize an electrical distribution board in this step-by-step guide designed for DIY enthusiasts, electricians, and anyone looking to ensure a...



Learn how to wire a circuit breaker panel step by step. Tools, safety tips, common mistakes, and a complete installation guide inside.



Wiring a panel box can be a daunting task, but with the right information and tools, it's a manageable job that can be done with precision and speed. In this article, we'll look at how to wire a ...



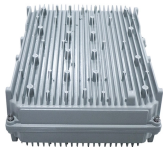
Learn the precise sequence for safely wiring an electrical panel, from essential grounding and service feed connection to branch circuit integration.



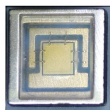
Find out how to properly wire an electrical panel box with a comprehensive diagram and step-by-step instructions.



These seven DIY electrical panel organization tips will help you transform your chaotic breaker box into a well-ordered system that any homeowner can be proud of.



Ideally, wire groups are installed in layers and wires are bent at right angles to buses or breakers. Label short sheathing sections (slugs) to indicate which circuits wires serve.



Here's a detailed breakdown of the process of installing a new electrical panel and wiring Romex NM-B cable to an outlet, light, and switch, all while adhering to the National Electrical Code ...

Contact Us

For more information, pricing, or custom network solutions, please contact us:

Website: <https://hashherbcafe.co.za>

Email: hello@hashherbcafe.co.za

Phone: +27 63 814 7295

Address: 15 Galaxy Road, Linbro Business Park, Johannesburg, 2065, South Africa

This document is for informational purposes only. Specifications subject to change without notice.

