

How to lay cables in layers within cable trays



Overview

When dealing with any mixture of cables, it is crucial to follow the National Electrical Code (NEC) regulations, specifically 392. The key requirements for cable tray installation include: Incorrect installation can lead to overheating, cable damage, or system failure. This is why proper planning and execution are. But before you lay the first tray or clamp down a single cable, you need a solid plan. This guide breaks down the process step by step. Mark the cable tray route based on your electrical cable tray design and site. Installation of Cable in Cable Trays involves precise routing on support systems, NEC/IEC compliance, grounding, ampacity derating, bend radius control, segregation of services, fire safety, labeling, and reliable cable management for industrial and commercial facilities. I see many electricians lay cables on a wrong way. A rung spacing of 6 to 9 inches (150 to 230 mm) is preferable when.

How to lay cables in layers within cable trays



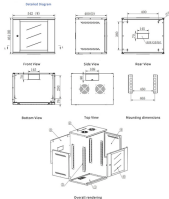
Learn the best practices for installing cables in trays. This guide covers essential steps, technical requirements, and key details for efficient cable tray installation.



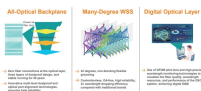
Cable tray layout must take into consideration the design limits of the cable. To minimize damage and verify integrity after installation, follow the practices outlined in cable handling and ...



This guide covers the critical steps, from selecting the right electrical cable tray and performing accurate cable fill calculations to managing a safe cable pull through and ensuring all bonding and grounding ...



In this video i am going to show you how to install cables on a tray properly. i see many electricians lay cables on a wrong way. cables must lay side by side with a little bit...



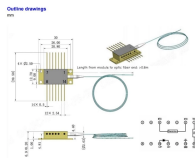
Instead of large conduits, cable channel may be used very effectively to support cable drops from the cable tray run to the equipment or device being serviced and is ideal for cable tray runs involving a ...



This document provides guidelines for installing cable in cable trays, including: 1) Calculations for maximum allowable tensions on cables using pulling eyes/bolts ...



When installing any mixture of cables in a cable tray, adherence to NEC 392.22 (A) (1) (a) is essential. No. 4/0 AWG or larger conductors must be placed side by side without stacking, ...



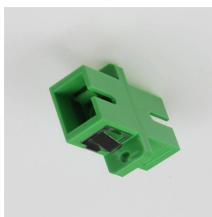
Learn everything about cable tray installation with our complete guide. Discover types, steps, and safety tips for efficient electrical cable management.



Center hung tray supports allow for quicker and easier cable installation by allowing cables to be deposited into tray systems from each side. There is a maximum load capacity per hanger of 318 kg ...



In designing supports for a cable tray system, consideration should be given to the loads associated with future cable additions and any additional loading that may be applied to the cable tray system (e.g., ...



Mastering cable tray installation is crucial for creating a safe, organised, and efficient cable management system. By following this step-by-step guide, you can ensure a seamless setup that ...

Contact Us

For more information, pricing, or custom network solutions, please contact us:

Website: <https://hashherbcafe.co.za>

Email: hello@hashherbcafe.co.za

Phone: +27 63 814 7295

Address: 15 Galaxy Road, Linbro Business Park, Johannesburg, 2065, South Africa

This document is for informational purposes only. Specifications subject to change without notice.

