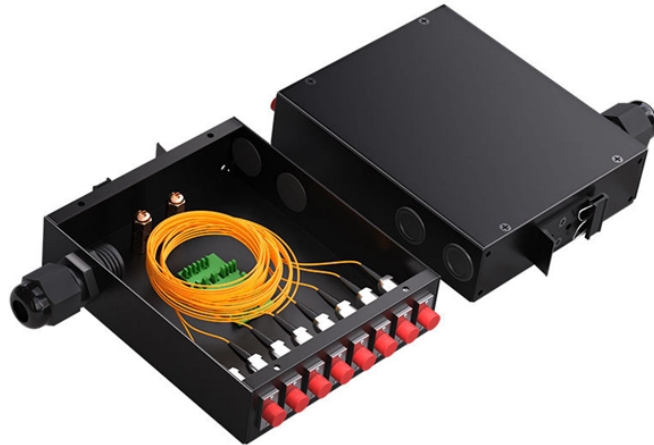


How to label the model number of cable tray tees



Overview

How to generate the part number – CTUT (depth)/W1/W2 (finish) Example – CTUT 25/0300/0150/PG Table below shows a complete list of W1 and W2 combinations. Finish: pre galvanised = PG, post galvanised = HDG, stainless steel grade 1. 4404 (316L) = SSO

Our cable tray design considerations guide details key factors to consider when designing cable tray systems for industrial and commercial applications. Eaton's submittal builder tool. This standard specifies the requirements for nonmetallic cable trays and associated fittings designed for use in accordance with the rules of the Canadian Electrical Code (CEC) Part 1, and the National Electrical Code® (NEC). us-trations without notice. All illustrations, descriptions and technical information included in this document are provided as indications and can cable trays are equivalent. The mechanical and electrical characteristics, tests, certifications, overall quality management, recommendations mentioned. Cable tray and pipe labels are made from opaque high performance cast vinyl films. The information has been.

How to label the model number of cable tray tees



Our cable tray design considerations guide details key factors to consider when designing cable tray systems for industrial and commercial applications. Browse or download the cable tray catalog for ...

- ✓ Use our ribbon (RT) for standard wiring applications
- ✓ Use our ribbon (RT) for special installation applications
- ✓ RT has ribbon - for standard applications



Using our black, white, blue, or red ribbons, you can create remarkable cable tray and pipe labels.



Please click the appropriate link below to view the catalog section as a PDF.



Drawings show different bent cable tray types like 90 degree and 45 degree horizontal bends with curved or straight radiuses. Notes specify other available sizes and provide examples of part ...



When fitting cable trays and their accessories, the products are cut on site to create changes of direction, adjust sections, etc. Damage can also occur during handling; as a result, both the ...



This guide covers cable ladder systems, cable tray systems, channel support systems and associated supports intended for the support and accommodation of cables and possibly other electrical ...



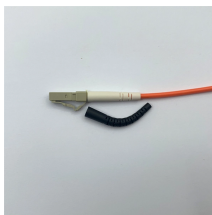
Tees and X Junctions Wire Mesh Cable Tray Reducer and Tee Junction Instructions CABLE TRAY CUTTING & BENDING GUIDES CONFIGURING CABLE TRAYS FOR INSTALLATION Horizontal Tees



Cooper B-Line has recognized the need for a complete cable tray reference source for electrical engineers and designers. The following pages address the 2011 National Electric Code® ...



The Cable Tray Institute is making available the current edition of this practical guide for the proper installation of aluminum or steel cable tray systems. These guidelines will be useful to engineers, ...



We offer a range of cable crossovers and tees, available in both equal and unequal measures, for light, medium, and heavy duty cable tray systems in widths of 50mm - 900mm.

Contact Us

For more information, pricing, or custom network solutions, please contact us:

Website: <https://hashherbcafe.co.za>

Email: hello@hashherbcafe.co.za

Phone: +27 63 814 7295

Address: 15 Galaxy Road, Linbro Business Park, Johannesburg, 2065, South Africa

This document is for informational purposes only. Specifications subject to change without notice.

