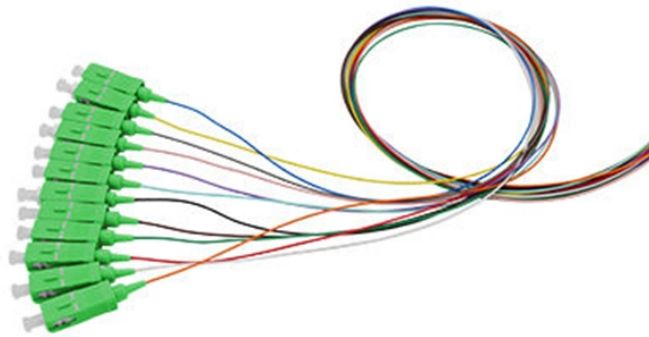


## How to install a wall-mounted electrical distribution box at the entrance



### Overview

In this step-by-step tutorial, we'll cover:  Tools you need  Safety precautions  Mounting the box  Wiring tips  Final checks Perfect for beginners, DIYers, and electricians who want a clear installation guide. more Learn how to properly install an electrical. Learn how to install a distribution box safely and correctly. Covers wiring, placement, standards, and expert tips for a compliant setup. Selecting the correct box. This guide will walk you through the essentials of mounting an electrical box, ensuring safety and compliance with electrical codes. Let's see what factors need to be taken care of when choosing the installation place. If the outlet is protected from direct weather exposure, such as by a porch roof, it must have a cover.

## How to install a wall-mounted electrical distribution box at the entrance



In this step-by-step tutorial, we'll cover: Tools you need...more. Learn how to properly install an electrical box safely and efficiently.



Reliable cable distribution boxes ensure safe, efficient power management for residential, commercial, and industrial systems. Learn installation and safety tips.



Before starting the installation, finding a proper place for putting the distribution box is crucial, because it largely decides the safety and convenience of maintenance. Let's see what factors ...



Install a secure, weatherproof exterior electrical box. Learn proper selection, secure mounting, moisture exclusion, and essential NEC code compliance.



Mounting new electrical boxes is a simple process, but the job does require careful planning. Whether you are upgrading the electrical system in an old home or planning your electrical ...



Junction boxes protect electrical wires from damage, prevent shocks, and stop sparks from igniting flammable material nearby. To install one, you'll need to strip the ends off all the wires that will be in the box.



Up to 24% cash back. Learn how to mount a weatherproof electrical box on an exterior wall, cut the opening, run wiring, and seal gaps to avoid moisture problems.



To install an electrical box into drywall or plaster without the need for wall studs or joists, follow these expert tips. The box must be waterproof and have a cover suitable for the location. If the ...



Electrical box installation is regarded as easy work—more like carpentry than electrical wiring. But there are still some common errors that do-it-yourselfers frequently make. Follow these ...



Learn how to install a distribution box safely and correctly. Covers wiring, placement, standards, and expert tips for a compliant setup.

## Contact Us

For more information, pricing, or custom network solutions, please contact us:

Website: <https://hashherbcafe.co.za>

Email: [hello@hashherbcafe.co.za](mailto:hello@hashherbcafe.co.za)

Phone: +27 63 814 7295

Address: 15 Galaxy Road, Linbro Business Park, Johannesburg, 2065, South Africa

This document is for informational purposes only. Specifications subject to change without notice.

