

# How to inspect a three-level distribution box



## Overview

Make it a habit to inspect distribution boxes at least once a month visually. Look for loose, corroded, or damaged connections, dirt buildup, or other issues. Wires should be neatly organized and secure. Check that the lug nuts are. This utility standard outlines the requirements for safely patrolling, inspecting, assessing, maintaining, repairing, and replacing electric distribution equipment. Inspect circuit breakers for proper operation. Dividing and routing power from the main line to individual branch circuits helps ensure electricity flows properly throughout a property. However, like any equipment, distribution boxes require. To ensure that the electrical testing & pre-commissioning of the control, distribution, and miscellaneous panel are carried out in a manner that is risk-free, productive, and in accordance with good working practice, as required by the project work specifications.

## How to inspect a three-level distribution box



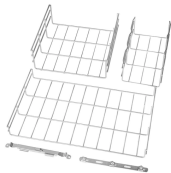
The box should be securely fastened so the device and box are secure. Homeowners doing their own work are well-advised to use large, spacious electrical boxes; not only does this ...



These maintenance practices apply to all electric distribution facilities owned and/or maintained by PG& E or subject to regulation by the California Public Utilities Commission (CPUC) and, where ...



This post is supposed to provide distribution panel testing and execute commissioning while the inspection checklist is being completed.



The document provides a 16 item checklist for inspecting a main ...



"Patrol inspection" shall be defined as a simple visual inspection, of applicable utility equipment and structures, that is designed to identify obvious structural problems and hazards.



Test the grounding system for continuity and resistance. Measure voltage levels at various points in the box. Perform insulation resistance testing on conductors. Check the operation of all circuit breakers ...



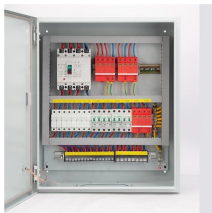
The document provides a 16 item checklist for inspecting a main distribution board or panel board.



Metal-enclosed switchgear, unit substations, transformers, pull boxes, connection boxes, and other similar associated equipment shall be marked with appropriate caution signs. If equipment is ...



Use our electrical panel inspection checklist to identify potential issues, ensure routine maintenance, and prevent costly failures of electrical systems.



This video details the design standards of this red construction site distribution box, its internal breaker configuration, and how to ensure electrical safety during construction.



However, like any equipment, distribution boxes require regular maintenance and care to continue functioning optimally. This article outlines essential maintenance tips for three-phase serial...

## Contact Us

For more information, pricing, or custom network solutions, please contact us:

Website: <https://hashherbcafe.co.za>

Email: [hello@hashherbcafe.co.za](mailto:hello@hashherbcafe.co.za)

Phone: +27 63 814 7295

Address: 15 Galaxy Road, Linbro Business Park, Johannesburg, 2065, South Africa

This document is for informational purposes only. Specifications subject to change without notice.

