

## How to identify the SFP optical module model



### Overview

The easiest way to determine the type of your SFP module is by checking the label or the product's specifications. SFP modules are transceivers used to connect network devices to various fiber optic or copper cables. Fiber Type: Single-mode fiber uses one mode of light to propagate through the fiber. Typically, single mode SFP modules are labeled as "SM" or "single mode," while multimode modules may be labeled as "MM" or "multimode."



## How to identify the SFP optical module model



Discover how to identify if your SFP (Small Form-factor Pluggable) module is single-mode or multimode. Look for SM or MM labels, check color coding, and consult manufacturer specs ...



To determine whether the SFP module you have is single-mode or multi-mode, the most reliable first step is to check its label or product manual.



Confused about whether your SFP is single-mode or multimode? Learn the differences, visual cues, wavelength ranges, and compatibility to avoid mismatched fiber connections and costly ...



That is why learning how to correctly identify an SFP module is very useful. Below, we will walk through several practical ways to do it, from the easiest checks to more technical methods.



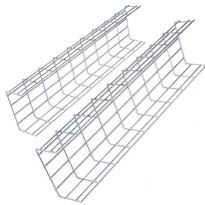
Understand the core function, compare data rates (1G to 25G), learn critical compatibility rules, and follow our 5-step checklist for selecting the perfect SFP optical module for your network build.



Read the definitive 2026 guide on SFP modules. We explain Single Mode vs Multimode, DDM diagnostics, and how to choose the right transceiver for Cisco, Juniper, and more.



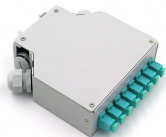
Learn how to check an SFP module using Cisco commands, diagnostics, and compatibility checks. Step-by-step guide to test SFP optics and choose the right module.



Here's a complete guide on how to identify the type of your SFP, with a focus on the most commonly used brands like Cisco, Huawei, and Ruijie. Why is it important to identify SFP ...



Master Cisco SFP module codes to prevent network failures. Complete guide on decoding model numbers, verifying authenticity, and avoiding compatibility issues.



Check your device model and software version (show version), then consult Cisco's compatibility matrix to choose supported SFP modules matching your network requirements.

## Contact Us

For more information, pricing, or custom network solutions, please contact us:

Website: <https://hashherbcafe.co.za>

Email: [hello@hashherbcafe.co.za](mailto:hello@hashherbcafe.co.za)

Phone: +27 63 814 7295

Address: 15 Galaxy Road, Linbro Business Park, Johannesburg, 2065, South Africa

This document is for informational purposes only. Specifications subject to change without notice.

