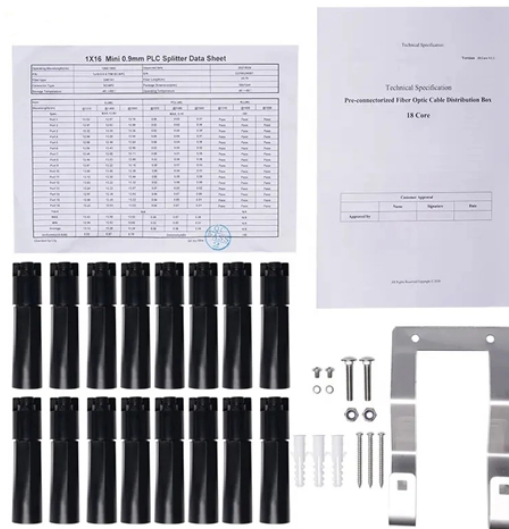


## How to connect to the core switch port



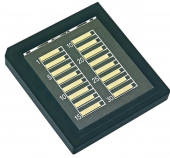
### Overview

It is connected from the console (RS-232 or RJ-45 port) port on the front or back of the switch to the com port (serial port) of the PC with the help of a console cable specially produced for the switch. In regards to the core switches, I have 2 X 3750v2 switches acting as core 1 and core 2. Are there any alternatives to this that don't require me buying anything else?

ore switches 12-16-2022 04:38 PM For a lab, you should. We have currently 2 switches Cisco C9300-NM-8X SFP+ and C9200 4SFP in a server room. Planning to rewire 2 buildings requiring at least 10 to 12 switches connecting IP phone and PC respectively. Server to all switch distance will be max. 50-60m. How can I connect them to core. Simply put, it defines how network. You can use the NETGEAR Insight app to register your switch. ACCOUNT and follow the onscreen instructions. Learn more Hello Friends, In this video I will show you Cisco Switch basic Configuration VLAN. In this guide, you will learn how to connect open networking switches using an RS232-RJ45 cable along with a USB-RS232 adapter. We'll walk you through each step—from preparing the necessary hardware and software to configuring a stable console connection.

Additionally, we'll address common issues.

## How to connect to the core switch port



In this guide, you will learn how to connect open networking switches using an RS232-RJ45 cable along with a USB-RS232 adapter. We'll walk you through each step—from preparing the ...



In the star topology, all devices need to be connected to the central hub, which means the core switch must have corresponding SFP ports that allow you to establish a dedicated fiber link ...



In this article, we will examine how to make basic settings on HP brand switches and backbone switches. Switch-PC connection can be done in 3 different ways.



Comprehensive guide to Core, Distribution, and Access Switches. Roles in the network and important parameters explained.



I am using Cisco 2960-XR Series Switch in this video tutorial. The commands I use in this video will work almost all cisco switch like 3550, 2960, 2950 and others.



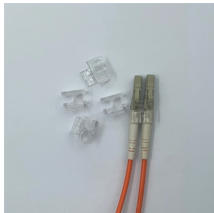
In regards to the core switches, I have 2 X 3750v2 switches acting as core 1 and core 2. In the course Jeremy connects these up using sfp modules and a fibre cable.



I would recommend at least 2 copper runs per switch, which you can then put in a port channel, so that you have 2 Gbps of uplink for all of your edge switches. If you are planning on just ...



**Making Fiber Port Connections** As a connection is made, check the Link LED on the switch corresponding to the port to be sure that the connection is valid. The 1000BASE-SX, 1000BASE-LX ...



# Use the console cable shipped with the device to connect the PC to the console port of the device. Plug the DB-9 connector of the console cable into the 9-pin serial port of the PC, and then plug the ...



The NETGEAR Insight app discovers the switch and registers it on the network that you named in Step 6. If the app does not discover the switch, make sure that your mobile device and the switch are ...

## Contact Us

For more information, pricing, or custom network solutions, please contact us:

Website: <https://hashherbcafe.co.za>

Email: [hello@hashherbcafe.co.za](mailto:hello@hashherbcafe.co.za)

Phone: +27 63 814 7295

Address: 15 Galaxy Road, Linbro Business Park, Johannesburg, 2065, South Africa

This document is for informational purposes only. Specifications subject to change without notice.

