


## How to connect the wiring to the fire control cabinet



### Overview

In this video, we cover: Fire alarm control panel (FACP) basic connections  
Smoke detector and heat detector wiring  
Manual call point (MCP) & hooter/sounder wiring  
End-of-line (EOL) resistor setup  
Power supply and battery connection  
Common wiring mistakes to. In this video, we cover: Fire alarm control panel (FACP) basic connections  
Smoke detector and heat detector wiring  
Manual call point (MCP) & hooter/sounder wiring  
End-of-line (EOL) resistor setup  
Power supply and battery connection  
Common wiring mistakes to. Understanding how to wire an FACP is essential for designing a reliable and efficient fire alarm system. This article explains FACP wiring, types of panels and wiring diagrams in a simple and professional manner. Fire alarm control panel wiring diagram showing connections to detectors, alarms and. In this comprehensive guide, we will walk you through the step-by-step process of fire alarm wiring, from planning and design to installation and testing. We will cover everything you need to know, including the different types of fire alarm systems, the necessary tools and materials, as well as. A device connected to a fire alarm system not required by the fire alarm standard, but may be required by other standards, e. door holders, smoke control fans,

remote LED indicators, remote alarm, or trouble units. Wire size. So, how do you wire an addressable fire alarm system?

In a nutshell, wiring an addressable fire alarm system involves carefully connecting its core components—the Fire Alarm Control Panel (FACP), initiating devices like smoke detectors and pull stations, and notification appliances such as horns.  Description: Learn how to wire a fire alarm panel properly in this step-by-step tutorial. more Audio tracks for some languages were automatically generated. These systems are designed to detect the presence of smoke, heat, or fire and notify occupants and authorities of potential emergencies.

## How to connect the wiring to the fire control cabinet



Join me live as I demonstrate the installation and wiring of a fire suppression control panel, smoke detectors, and accessories following NFPA standards.



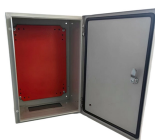
This section provides instructions for connecting cables, mounting, and testing the Matrix Fire Alarm Control Panel for installation. The following is a general checklist for the installation of the panel.



In this comprehensive guide, we will walk you through the step-by-step process of fire alarm wiring, from planning and design to installation and testing.



□□ Description: Learn how to wire a fire alarm panel properly in this step-by-step tutorial.



To truly grasp how fire alarm systems are wired, we've gotta start with the fundamentals. Think of a fire alarm system as a complex network, much like ...



Wiring up a system like this can feel like a daunting task, like tackling a really complex puzzle, but with the right know-how and a methodical approach, it's absolutely doable and immensely ...



Learn about the process of wiring a fire alarm control panel to ensure the safety of your building. Get tips and guidelines for proper installation.



Section 2: Wiring Requirements 2.1 Wire Sizing  
The SLC requires use of a specific wire type, depending on the mode of operation, to ensure proper circuit functioning. Wire size should be no smaller than 18 ...



The black wire from the hood lights connects to terminal block B and the white wire connects to terminal block W in the Control Panel. (Note: If the control panel is factory mounted in the fire cabinet with the ...



This section provides instructions for connecting cables, mounting, and testing the FireNET L@titude Fire Alarm Control Panel for installation. The following is a general checklist for the installation of the ...



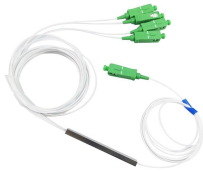
In this comprehensive guide, we will walk you through the step-by-step process of fire alarm wiring, from planning and design to installation and testing.



IFP-100 Installation Manual 4.15.2 City Box Connection Using the 5220 Module This section describes how to connect the control panel to a municipal fire alarm box ...



Step-by-step guide to wire a fire alarm system. Learn key components, safety tips, and why hiring a licensed professional is essential.



Understanding how to wire an FACP is essential for designing a reliable and efficient fire alarm system. This article explains FACP wiring, types of panels and wiring diagrams in a simple and ...

## Contact Us

For more information, pricing, or custom network solutions, please contact us:

Website: <https://hashherbcafe.co.za>

Email: [hello@hashherbcafe.co.za](mailto:hello@hashherbcafe.co.za)

Phone: +27 63 814 7295

Address: 15 Galaxy Road, Linbro Business Park, Johannesburg, 2065, South Africa

This document is for informational purposes only. Specifications subject to change without notice.

