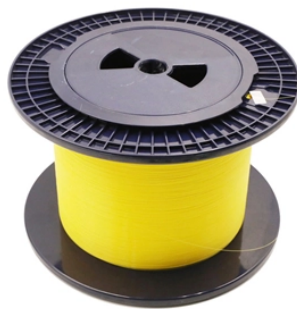


## How to connect the fiber optic cable to a fiber optic sensor



### Overview

This video demonstrates the process of installing a fiber optic sensor to a substrate for measuring distributed mechanical strain. Fiber optic sensor is a new all-optical amplifier used in fiber optic communication line to achieve signal amplification. For the examples described here, I used LEDs encapsulated in standard 5mm clear epoxy packages, and. Proper connection of fiber optic cables is essential to harness these benefits fully, as even minor errors can lead to significant performance issues like signal loss. This article will guide you through the necessary tools, materials, and methods on how to connect fiber optic cables effectively. This Application Note is intended to guide users of Luna's High Definition Fiber Optic Sensing (HD-FOS) system (the ODiSI) through the simple process of mounting a fiber sensor onto the surface of a test article.

## How to connect the fiber optic cable to a fiber optic sensor



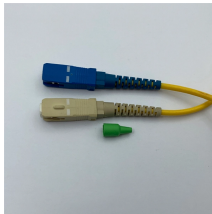
The EasyThrough allows linking of the optical sensor through the transformer tank wall. The EasyThrough consists of two ST-type mating sleeves, a 3/8" NPT stainless steel fitting with an optical ...



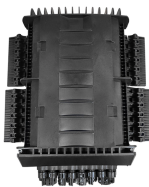
This article will guide you through the necessary tools, materials, and methods on how to connect fiber optic cables effectively, ensuring you achieve optimal performance from your fiber optic ...



This video demonstrates the process of installing a fiber optic sensor to a substrate for measuring distributed mechanical strain.



This guide, provided by Fibconet, delves into the structure and working principle of fiber optic connectors and outlines the critical steps for creating a successful connection.



This article provides an overview of fiber optic sensor installation ...



Fiber optic sensor is a new all-optical amplifier used in fiber optic communication line to achieve signal amplification. It is divided into communication supplies and industrial supplies, here we refer to the ...



Connecting fiber optic cables requires precision and care due to the delicate nature of the fibers. Here's a step-by-step guide on how to connect fiber optic cables using fiber optic connectors ...



Optical fiber couplers for various LEDs and light sensors are commercially available, but you can skip the connector and simply connect silica and plastic fibers directly to LEDs and sensors.



Transit cables are used to connect a sensor cable to the location of the DAS/DTS instruments. They are suited for indoor use and have an LSZH jacket ( Low Smoke Zero Halogen).



This article provides an overview of fiber optic sensor installation methods to help readers understand how a high-resolution distributed sensing system can be used in their applications.



This Application Note is intended to guide users of Luna's High Definition Fiber Optic Sensing (HD-FOS) system (the ODiSI) through the simple process of mounting a fiber sensor onto the surface of a test ...

## Contact Us

For more information, pricing, or custom network solutions, please contact us:

Website: <https://hashherbcafe.co.za>

Email: [hello@hashherbcafe.co.za](mailto:hello@hashherbcafe.co.za)

Phone: +27 63 814 7295

Address: 15 Galaxy Road, Linbro Business Park, Johannesburg, 2065, South Africa

This document is for informational purposes only. Specifications subject to change without notice.

