

How to connect the center opening of a 48-core optical cable



Overview

Insert the Cable: Position the cable into the designated entry hole of the closure. Seal with Tape: Wrap self-adhesive sealing tape between the two sealing rings to align with the outer diameter of the rings, creating. By following these detailed steps, the installation of your Fiber Splice Closure will be secure, organized, and maintained, ensuring high performance and longevity of your fiber optic network. Installing a fiber optic splice closure efficiently and effectively requires attention to detail and. □□ *In this video, I demonstrate a professional 48-core LC multimode fiber patch panel splicing in timelapse!* Perfect for network engineers, data center techs, and telecom professionals. Whether you're installing a new network, expanding an existing one, or. Midspan access involves opening the cable by removing the jacket and strength members, opening the buffer tube and splicing only the fibers being dropped at that point. The other, more common, method of joining fibers is called termination or connectorization.

How to connect the center opening of a 48-core optical cable



UC Merced Connect platform serves as a central digital gateway to UC Merced, offering simplified access to campus resources, information, and personalized messaging.



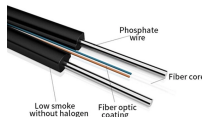
Midspan access involves opening the cable by removing the jacket and strength members, opening the buffer tube and splicing only the fibers being dropped at that point.



Explore fiber optic cable splicing and its advantages over connectorization. Learn how to join and extend fiber optic cables effectively.



📺 *In this video, I demonstrate a professional 48-core LC multimode fiber patch panel splicing in timelapse!* Perfect for network engineers, data center techs, and telecom professionals....



If a third or fourth cable is required, it is easier to install it in the upper end plate port as a branch cable. This fiber optic splice closure is designed for two cables in each of its two ports.



Forgot password? Don't have an account?



Connect, our all-in-one course platform streamlines your prep work, allows you to add instructors to any section, and surfaces more information in fewer clicks. Its innovative features empower you to take ...



Check your registered MFA device to respond, if applicable...



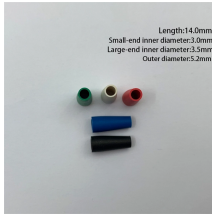
Please Login with your McGraw-Hill credentials to view this item.



Master how to connect fiber optic cable with our detailed guide. Step-by-step instructions to ensure you achieve the best performance and reliability in your setup.



Secure the Cable: Insert the sealed cable end into the closure and use a hose clamp to secure the cable to the base of the splice closure. Tighten the clamp to ensure stability.



Can't access your account? Usage Guidelines URL:
Privacy Policy URL: ...



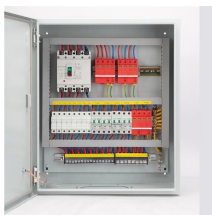
However, working with fiber requires specialized skills and equipment to connect cables properly. This guide will walk you through the complete process of connecting fiber optic cable.



Here's a step-by-step guide on how to connect fiber optic cables using fiber optic connectors and fusion splicing, which are the two main methods: Fiber optic connectors are used to ...



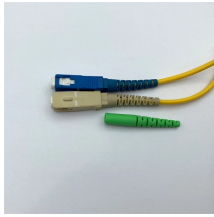
Forgot your password? By clicking "Sign In", I confirm that I have read and agree to the terms of the McGraw Hill Terms of Use, the Video Viewing Notice, the Consumer Purchase Terms if applicable, ...



Forgot Password?



In this guide, we'll walk you through the entire process of preparing fiber optic cable for splicing and termination to fiber connectors. We'll explore the necessary tools, safety precautions, ...



There are 2 methods of splicing, mechanical or fusion. Both methods provide much lower insertion loss compared to fiber connectors. Fiber optic cable mechanical splicing is an alternate ...



Running, walking, cycling, swimming, skiing, triathlons - no matter how you move, you can record your active lifestyle on Garmin Connect. It's the only online community created specifically for Garmin ...



With Connect®, every click and conversation helps build a classroom where every learner feels seen. Artificial intelligence is now a routine part of student life, with 90% using generative AI—driving ...

Contact Us

For more information, pricing, or custom network solutions, please contact us:

Website: <https://hashherbcafe.co.za>

Email: hello@hashherbcafe.co.za

Phone: +27 63 814 7295

Address: 15 Galaxy Road, Linbro Business Park, Johannesburg, 2065, South Africa

This document is for informational purposes only. Specifications subject to change without notice.

