

How to connect horizontal and parallel cable trays



How to connect horizontal and parallel cable trays



This guide covers the critical steps, from selecting the right electrical cable tray and performing accurate cable fill calculations to managing a safe cable pull through and ensuring all bonding and grounding ...



Cable trays are available in different configurations, straight sections are available to route cables in a horizontal or vertical plane. Fittings are available to route cables in various directions in either the ...



In cases where multiple cables need to be connected parallelly in the same phase; ensuring that the same current goes through all cables is possible by the right ...



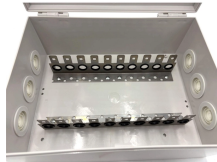
We also have the Electrical Box Attachment that can be used to attach a electrical box onto the side of your cable tray raceways. Plus we sell a Ground Bolt that can be used at any location of the tray for a ...



In cases where multiple cables need to be connected parallelly in the same phase; ensuring that the same current goes through all cables is possible by the right phase sequence and the correct ...



Learn common methods for connecting cable trays safely and efficiently. Our guide covers splice plates, quick-connects, and key tips for secure electrical cable management.



These documents: ANSI/NEMA VE-1, Metal Cable Tray Systems; NEMA VE-2, Cable Tray Installation Guidelines; and NEMA FG-1, Non Metallic Cable Tray Systems, are an excellent industry resource in ...



Refers to the approximate height of a cable tray used for specifying. Selecting a specific height will show cable trays with that height, as well as cable tray accessories compatible with that height.



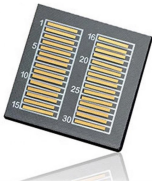
Cable tray is considered to be a system. It must provide continuous support for cables, and the electrical continuity of the cable tray system must be maintained.



Step-by-step on-site guide: learn how to plan, mark, support, and install cable trays correctly, from shop drawing approval to final checks.



Some applications may require the cable tray to support the weight of a single, dead object in addition to the cable loads. Specifications typically require this to be applied at the midpoint of the span between ...



Learn how to connect multiple sections of wire mesh baskets or cable trays efficiently. Tips, tools, and techniques from cable management experts at CMW.

Contact Us

For more information, pricing, or custom network solutions, please contact us:

Website: <https://hashherbcafe.co.za>

Email: hello@hashherbcafe.co.za

Phone: +27 63 814 7295

Address: 15 Galaxy Road, Linbro Business Park, Johannesburg, 2065, South Africa

This document is for informational purposes only. Specifications subject to change without notice.

