

How to connect a metal fiber optic patch panel



Overview

This article provides a comprehensive guide on installing fiber optic patch panels, integrating practical installation steps with insights from business intelligence and data analytics. It also known as a fiber patch panel or fiber distribution panel. It serves as a central point for organizing, managing, and connecting fiber optic cables. These individual strands will then connect to electronic devices. Connecting a patch panel is a relatively simple task that can save you time and money when it comes to setting up and managing a network system. Penetrate the enclosure from the side or bottom to minimize the risk of water intrusion. more How to, y, and environmental instructions.

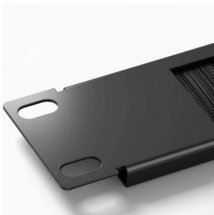
How to connect a metal fiber optic patch panel



Explore CommScope's efficient and scalable fiber splice panels designed for seamless connectivity. Accommodating LC, SC, and MTP/MPO connectors, these panels are ideal for data centers, ...



Fiber optic cable can be terminated in a patch panel using both pigtail or field-installable connector fiber termination techniques. The pigtail approach requires that a splice be made and a splice tray be ...




How to Install a Fibre Connector into a Fibre Optic Patch Panel. This video shows how to install a fibre connector correctly into a patch panel. How do ...





This article will explain how to connect a patch panel to ensure your network's best performance. The use of patch panels is becoming increasingly popular in data centers and office ...




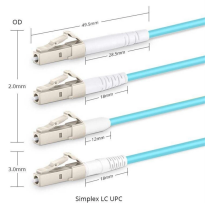
A technical guide on choosing the best Fiber Patch Panel to install & terminate fiber optic cable for any indoor/outdoor industrial communication project.


	<p>At its core, a fiber optic patch panel acts as a hub for terminating and interconnecting the individual fibers within a network. It typically consists of a sturdy enclosure, often made of metal or ...</p>
---	---

	<p>How to Install a Fibre Connector into a Fibre Optic Patch Panel. This video shows how to install a fibre connector correctly into a patch panel. How do you install fibre optic...</p>
---	---

	<p>This article provides a comprehensive guide on installing fiber optic patch panels, integrating practical installation steps with insights from business intelligence and data analytics.</p>
--	--

	<p>Information on how to install all of the 3M copper cabling products, such as 3M Copper Cables, 3M RJ45 Jacks, 3M Copper Patch Panels & Management Panels and consolidation point (CPs).</p>
---	--

	<p>There are also patch panels designed with fiber optics in mind. These can support a range of optical fiber connectors, including lucent connector (LC), subscriber connector (SC), and ...</p>
---	---

	<p>A technical guide on choosing the best Fiber Patch Panel to install & terminate fiber optic cable for any indoor/outdoor industrial communication project.</p>
---	---



Maintain a minimum bend radius of 1.5 to 2 inches when looping individual fiber strands. Failure to do so may result in high attenuation and damage to the cable and fiber.

Contact Us

For more information, pricing, or custom network solutions, please contact us:

Website: <https://hashherbcafe.co.za>

Email: hello@hashherbcafe.co.za

Phone: +27 63 814 7295

Address: 15 Galaxy Road, Linbro Business Park, Johannesburg, 2065, South Africa

This document is for informational purposes only. Specifications subject to change without notice.

