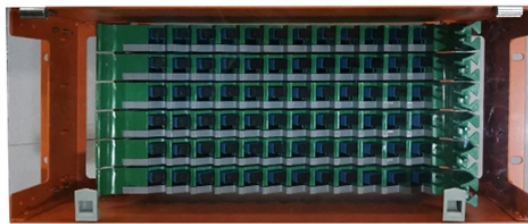


## How to check the control circuit of a distribution box



### Overview

Make sure your box sits in a dry, easy-to-reach spot with good airflow. Look for neat cables, solid grounding, and the right wire size. Check for UL or CE marks and make sure everything follows local codes. Understanding how to safely and effectively test a breaker box with a multimeter is a crucial skill for any homeowner or electrician. Ignoring this vital. To ensure that the electrical testing & pre-commissioning of the control, distribution, and miscellaneous panel are carried out in a manner that is risk-free, productive, and in accordance with good working practice, as required by the project work specifications. This article series discusses procedures for safe and effective visual inspection of residential electrical systems including electrical panels and other components, when the. Knowing your distribution box helps you see which breaker does what. Use. Use our electrical panel inspection checklist to identify potential issues, ensure routine maintenance, and prevent costly failures of electrical systems. The very cheapest one you can find at a local hardware store (or online) will work great.

## How to check the control circuit of a distribution box



Trace the outgoing line circuit: Analyze the outgoing line circuits of the distribution box one by one, understand the load equipment and protection method of each circuit, and ensure that each ...



Before Touching Or Opening The Electrical Panel For Inspection  
 Electrical Branch Circuit Wiring Amps/Fusing Defects - Copper Electrical Wiring  
 Problem-Brand Electrical Panels  
 Electrical Panel Location Defects  
 Relative Electrical Safety of Fuses Versus Circuit Breakers  
 Other Electrical Panel Defects Discoverable by Visual Inspection  
 Reader Q& A - Also See Recommended Articles & FAQs  
 Question: 50 Volts on One Buss and 190 on The other.  
 Question: A 8 Space 16 Circuit Panel and A 16 Space 16 Circuit Panel?  
 (June 1, 2014) Anonymous said: I had 225 volts on a 15 amp. The last thing I tried was a 15 amp electric heater. That gave me 50 volts on one buss and 190 on the other. This is a sub panel but I have replaced the 100 amp in the main just in case. I am checking voltage from each of the buss to the common buss. See more on inspectapedia onestop-ep



When devices in your new box don't work, you start by testing the circuit. You will want a voltage tester (doesn't need to be a voltmeter) for this job. The very cheapest one you can find at a ...



Check the insulation between wires using an insulation tester; if any is found, replace it right away. Additionally, note the insulation resistance (IR) value for each circuit in the format that is ...



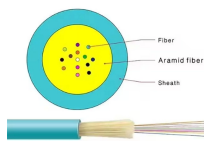
Regular maintenance is crucial for ensuring the safe and reliable operation of your breaker box. By following the guidelines outlined in this comprehensive guide, you can confidently ...



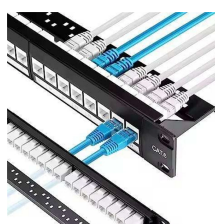
In this video, we'll guide you through the complete wiring diagram of a distribution panel.



Hey, in this article we are going to see the Single Phase Distribution Box Wiring Diagram and Connection Procedure. A distribution board or distribution box is where the main power supply is ...



Understand your distribution box labels to identify circuits, improve safety, and troubleshoot electrical issues in your home with confidence.



Main electrical panel inspection procedures & defects: This article summarizes inspection of the building electrical panel, main panel, or electrical distribution and sub panels.



Test the grounding system for continuity and resistance. Measure voltage levels at various points in the box. Perform insulation resistance testing on conductors. Check the operation of all circuit breakers ...



Use our electrical panel inspection checklist to identify potential issues, ensure routine maintenance, and prevent costly failures of electrical systems. Preventive maintenance for electrical ...

## Contact Us

For more information, pricing, or custom network solutions, please contact us:

Website: <https://hashherbcafe.co.za>

Email: [hello@hashherbcafe.co.za](mailto:hello@hashherbcafe.co.za)

Phone: +27 63 814 7295

Address: 15 Galaxy Road, Linbro Business Park, Johannesburg, 2065, South Africa

This document is for informational purposes only. Specifications subject to change without notice.

