

How to check light intensity without a light power meter



Overview

Professional photographers and lighting installers usually use a digital meter, but you can also make a simple, comparative light meter called a Joly photometer. Understand photometers that measure lux and foot-candles. These are units that describe the intensity of. Measuring light intensity is important when designing a room's lighting or preparing for a photograph. If you're just getting started with light measurement, or photometry as it's called, photodiodes are a great way to dip your toes in. com also needs to be installed. Start Visuino as shown in the first picture Click on the " Tools " button on the Arduino component (Picture 1) in Visuino When the dialog appears, select " Arduino UNO " as shown in Picture 2 In Visuino, at the bottom, click on the "Build". Learn how to build a Simple Lux Meter to measure light intensity using a BH1750 sensor, Arduino UNO, and Visuino! This easy DIY project is perfect for beginners. Watch the video! The Visuino: <https://www.>

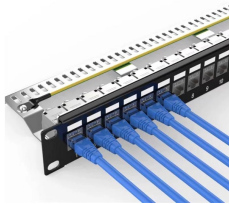
How to check light intensity without a light power meter



This article will explore three methods we can use to measure light intensity at home, the shadow test, a smartphone light meter app, and a proper light meter. Each of these methods can ...



Learn how to build a Simple Lux Meter to measure light intensity using a BH1750 sensor, Arduino UNO, and Visuino!. Find this and other hardware projects on Hackster.io.



In this activity you'll use the light sensor on a phone or a tablet to examine the brightness of light from different light sources and locations.



Discover how to use photodiodes for accurate light measurement in photometry. Learn the basics of building a simple light meter with Si PIN photodiodes and practical tips for light intensity ...



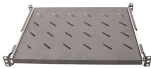
Learn how to build a Simple Lux Meter to measure light intensity using a BH1750 sensor, Arduino UNO, and Visuino! This easy DIY project is perfect for beginners.



With a little knowledge of physics, supplied below, you'll be able to discover which of your light bulbs gives off more light, as well as which are most efficient for the amount of power they use.



When estimating light intensity without the aid of specialized tools, there are several factors to keep in mind to ensure accuracy. First, consider the time of day and the position of the sun, ...



Discover how to use photodiodes for accurate light measurement in photometry. Learn the basics of building a simple light meter with Si PIN ...

Contact Us

For more information, pricing, or custom network solutions, please contact us:

Website: <https://hashherbcafe.co.za>

Email: hello@hashherbcafe.co.za

Phone: +27 63 814 7295

Address: 15 Galaxy Road, Linbro Business Park, Johannesburg, 2065, South Africa

This document is for informational purposes only. Specifications subject to change without notice.

