

How should the electrical distribution box equipment be arranged



Overview

Choose the right box based on environment (indoor/outdoor), load capacity, and durability. Check for proper IP/NEMA ratings and material quality. It takes the incoming power and safely distributes it to different circuits throughout your building. A distribution box, also known as a. ABSTRACT: Many factors affect the type and layout of power equipment. Many companies are adopting zero energized work policies. You leave space for safety devices like. In industrial power distribution systems, cable distribution boxes (also known as power distributor boxes, distribution electrical boxes, or electrical power distribution boxes) are the core hub of power transmission, branching, and protection. This article mainly talks about the first one.



How should the electrical distribution box equipment be arranged



The IEC has published multiple standards that apply to Power Distribution Board Design. These documents cover construction, protection, spacing, and labeling of all components.



In this article, we will explore the differences between should and shall, explain when and how we typically use these words, and provide examples of how we typically use them in sentences.



Choose the right size and setup for multiple circuit breakers in your distribution box to ensure safety, code compliance, and room for future upgrades.



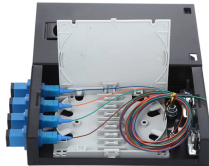
Design of Electrical Distribution Panel - Free download as PDF File (.pdf), Text File (.txt) or read online for free. This document outlines the design and functionality of electrical distribution panels, detailing ...



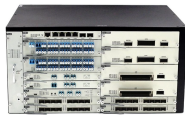
SHOULD definition: must; ought (used to indicate duty, propriety, or expediency). See examples of should used in a sentence.



Understanding the key components of a distribution box helps you make informed decisions about installation and maintenance. Each element plays a specific role in ensuring safe ...



SHOULD definition: 1. used to say or ask what is the correct or best thing to do: 2. used to show when something is.... Learn more.



Learn how to install a distribution box safely and correctly. Covers wiring, placement, standards, and expert tips for a compliant setup.



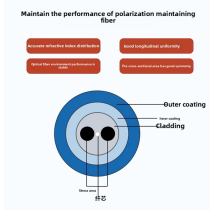
Learn how to use the English verbs should, must, and ought to. Get clear, simple grammar advice from expert English teachers at the British Council.



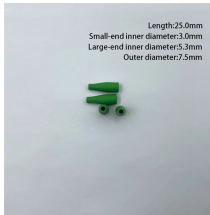
Learn the difference between must vs should with clear examples to improve your English grammar, writing, and speaking.



Should is a modal verb, and all modal verbs are followed by an infinitive (without to). You should to listen to me. You should listen to me. The negative form of should is should not or shouldn't. You should ...



Master the safest and most efficient circuit breaker wiring configurations. Learn about single-phase vs. three-phase setups, safety standards, and future-proof electrical planning.



Master the safest and most efficient circuit breaker wiring configurations. Learn about single-phase vs. three-phase setups, safety standards, and future-proof electrical ...



Each has its own unique standards and application guidelines, and one facet of good power system design is the knowledge of when to apply each type of equipment and the limitations of each type of ...



(Grammar) the past tense of shall: used as an auxiliary verb to indicate that an action is considered by the speaker to be obligatory (you should go) or to form the subjunctive mood with I or we (I should ...



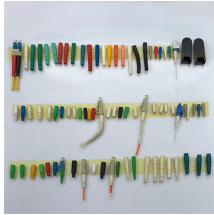
To balance electrical loads between phases in the panel, bus blades (the parts that stick up and breakers snap on to) alternate between Phase A and Phase B as you move up or down a panel.



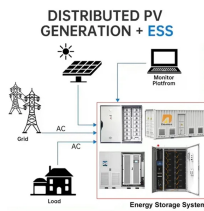
Follow the core layout principles to ensure that the cable distribution box network is efficient, easy to maintain, and scalable. The cable distribution box should be installed near the load ...



Before starting the installation, finding a proper place for putting the distribution box is crucial, because it largely decides the safety and convenience of maintenance. Let's see what factors ...



Should and ought to both give advice or express expectation; should is more common, while ought to sounds more formal and slightly stronger.



The meaning of SHOULD is —used in auxiliary function to express condition —usually used with if. How to use should in a sentence.



This article explains the use of should in sentences in English grammar. It also describes the use of should, use of shall, and would and use of "should have".

Contact Us

For more information, pricing, or custom network solutions, please contact us:

Website: <https://hashherbcafe.co.za>

Email: hello@hashherbcafe.co.za

Phone: +27 63 814 7295

Address: 15 Galaxy Road, Linbro Business Park, Johannesburg, 2065, South Africa

This document is for informational purposes only. Specifications subject to change without notice.

