

How many units U are typically included in a network server rack model



Overview

Q: How many rack units are in a full rack?

A: A full server rack typically contains around 42 rack units, with some offering slightly more or fewer depending on design. U (rack unit, RU) is a unit of equipment height in a 19" rack. Important: U describes height only, but a server's real "capabilities" are also determined by chassis depth, internal layout, airflow, rails, power, and expansion (PCIe/risers, NVMe). Each rack unit of 1U, 2U, and 4U corresponds to a fixed height in inches, forming the basis for all rack calculations. Understanding these measurements helps professionals determine rack capacity, distribute space efficiently, and make sure all equipment fits properly. This article explains definition, planning, installation tips, and trends. Most IT environments default to 42U, 19-inch width, and 1000-1200 mm depth unless space constraints or special equipment dictate. We explain what 1U, 2U, 18U, 42U, and other configurations mean, discussing precise dimensions, tolerances, and essential

parameters.

How many units U are typically included in a network server rack m



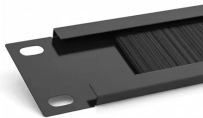
In this guide, we break down the anatomy of a server rack, explain the mysterious “Rack Unit (U),” and help you decide between an Open Frame, Enclosed Cabinet, or Wall Mount for your 2026 infrastructure.



Below is a comprehensive, fully detailed guide covering all standard server rack sizes, form factors, height considerations, depth classifications, and ...



The "U" unit is more than just a measurement—it is the cornerstone of network server accessory design. From 1U and 2U servers to full 42U racks, every ...



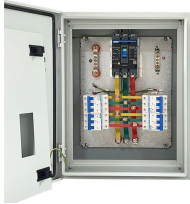
Rack servers are commonly 1U to 4U in size (larger 3U or 4U units are often used for storage-heavy or GPU-intensive tasks). UPS (Uninterruptible Power Supply) units are commonly 2U ...



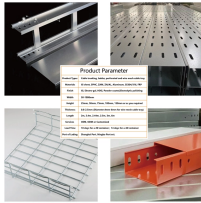
A standard 42U server rack can fit forty-two 1U devices, or a mix such as twenty-one 2U servers or ten 4U storage units. The flexibility of U sizing allows you to combine servers, switches, ...



For most “first server in a rack” cases, 2U is the most predictable choice: it's easier to balance drives/PCIe/cooling without surprises. These configurations are usually simpler to spec and ...



The most common server rack size is 42U, 19-inch width, with 1000 mm depth. This configuration fits most enterprise servers and networking equipment while leaving room for cable ...



The "U" unit is more than just a measurement—it is the cornerstone of network server accessory design. From 1U and 2U servers to full 42U racks, every component in a data center is built around this ...



You'll instantly know how tall your server rack needs to be—and whether your gear will fit—once you understand that 1U = 1.75 inches (44.45 mm), and standard full-height racks are 42U ...



In this guide, we break down the anatomy of a server rack, explain the mysterious “Rack Unit (U),” and help you decide between an Open Frame, Enclosed ...



Below is a comprehensive, fully detailed guide covering all standard server rack sizes, form factors, height considerations, depth classifications, and best-practice configuration approaches ...



U, or sometimes RU, is the abbreviation for unit or rack unit. One rack unit or U is equivalent to 1.75 inches or 44.45 millimeters. So, a 42U rack provides a total of 73.5 inches of available vertical ...



Q: How many rack units are in a full rack? A: A full server rack typically contains around 42 rack units, with some offering slightly more or fewer depending on design.

Contact Us

For more information, pricing, or custom network solutions, please contact us:

Website: <https://hashherbcafe.co.za>

Email: hello@hashherbcafe.co.za

Phone: +27 63 814 7295

Address: 15 Galaxy Road, Linbro Business Park, Johannesburg, 2065, South Africa

This document is for informational purposes only. Specifications subject to change without notice.

