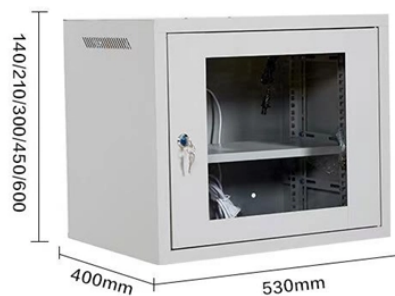


How many seconds does the secondary distribution box trip



Overview

For emergency power — defined as Level 1 in NFPA 110 — 10 seconds is the standard. Assume an IAC inverse-time relay in a circuit where the circuit breaker should trip on a sustained current of approximately 450 amperes, and that the breaker should trip in 1.9 seconds on a short-circuit current of 3750 amperes. A spot network load of up to 25 MVA may be supplied by as many as six primary feeds. Nearly all spot networks in North America function at a 480Y/277-V secondary voltage. High service secondary unit substation is a close-coupled assembly consisting of enclosed primary high voltage equipment, three-phase power transformers, and enclosed secondary low-voltage equipment. The following electrical ratings are typical: As a result of locating power transformers and their close-coupled. A primary distribution substation is the connection point of a distribution system to a transmission or a sub-transmission network. Items such as arc-fault detection, pulse width modulation, remote load power control, load power monitoring, automated load shedding, and other prognostic or diagnostic maintenance activities requirements without any redesign. The SPDU offers up to 54 configurable

How many seconds does the secondary distribution box trip



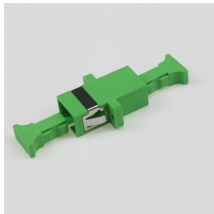
Factors affecting the fluctuation of the secondary voltage level are the primary side voltage level and the secondary side load current. To enable the secondary voltage adjustment to compensate these ...



The SPDU (Secondary Power Distribution Unit) provides a compact, lightweight means to distribute 288A at 28 VDC power to 54 loads in the aircraft to save weight, space, and cost by eliminating ...



Substations Substations serve as critical nodes connecting generation, transmission, and distribution networks. While substations are used for several distinct system functions, most utilize electric power ...



From this analysis, it appears that the relay will have a 0.2-second margin is generally considered desirable to guard against variations from published characteristics, errors in reading curves, etc.



Banking of distribution transformers on secondary side refers to connection between secondary mains supplied by two or more distribution transformers connected to the common primary.



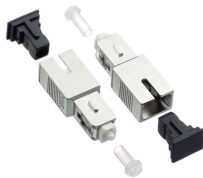
To prevent nuisance starts, there's usually a time delay of about 1 to 3 seconds on the transfer, leaving even less time to move the load. With bigger units, the time delay is sometimes reduced to buy more ...



Search the world's information, including webpages, images, videos and more. Google has many special features to help you find exactly what you're looking for.



Note: For Single Family Dwellings, with the exception of commercial customers fed from a separate transformer, all secondary services are served from a secondary pedestal connected to a transformer.



A trip signal on any phase will open all three phases, eliminating single phasing of three-phase loads. The VFI breaker may also be used as a three-phase load-break switch. An optional ...



The simplest primary distribution system consists of independent feeders with each customer connected to a single feeder. Since there are no feeder interconnections, a fault will ...

Contact Us

For more information, pricing, or custom network solutions, please contact us:

Website: <https://hashherbcafe.co.za>

Email: hello@hashherbcafe.co.za

Phone: +27 63 814 7295

Address: 15 Galaxy Road, Linbro Business Park, Johannesburg, 2065, South Africa

This document is for informational purposes only. Specifications subject to change without notice.

