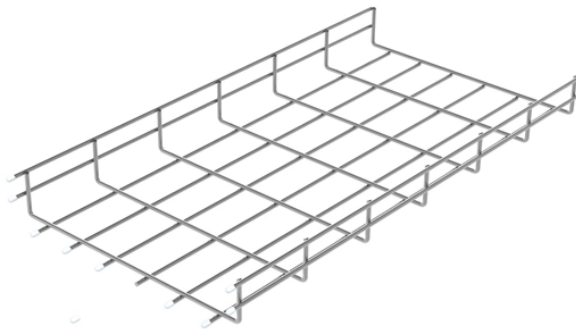


How many pipes are in a household electrical distribution box



Overview

The number of wires permitted inside an electrical box is limited by the box's volume, measured in cubic inches, to prevent overheating and insulation damage. Every conductor, device, and internal clamp takes up a specific volume within the box. How to Wire a GFCI Outlet without a Ground Wire in an Older Home. Electrical Tips and Be Sure to Subscribe! Part (1) of Section 370-16 (a) describes in detail the method of counting wires, as well as clamps, fittings, or devices (i., switches, receptacles, combination devices) - by establishing. The National Electrical Code restricts the number of conductors that are allowed in a single electrical box. Single Phase Distribution Box generally consists of Double Pole MCBs, Single Pole MCBs, and RCCBs. Calculate the minimum required box volume according to NEC standards Enter your specifications and click calculate to see the required box volume Complete Guide to Electrical Box Fill Calculations for Safe and Code-Compliant Installations Junction box sizing refers to determining the minimum cubic. The relationship between electrical power is defined by the formula: Watts (W) = Volts (V) x Amperes (A). Compute the branch circuits, feeders, service-entrance conductors, and wire protection.

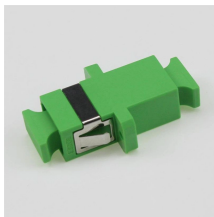
How many pipes are in a household electrical distribution box



In this article, we will explore the specifications for household distribution boxes and provide guidance on how to install them correctly. Specifications of Household Distribution Boxes



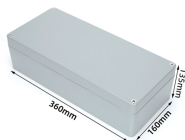
You use many to indicate that you are talking about a large number of people or things. I don't think many people would argue with that. Not many films are made in Finland. Do you keep many books ...



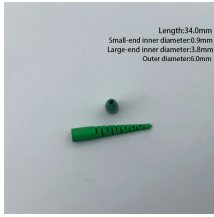
Determining Wire Fill Limits in Electrical Boxes The number of wires permitted inside an electrical box is limited by the box's volume, measured in cubic inches, to prevent overheating and ...



Clearance: Electrical panels must be installed in a readily accessible area with a minimum clearance of 30 inches (762 mm) wide, 3 ft (36 inches or 914 mm) deep, and 6.5 feet (\approx 2 meter) high in front of ...



To find out if your electrical box can handle more wires or devices, count everything inside first. Begin by checking the box's volume, which tells you how many conductors—wires and ...



"Many" describes a large quantity of countable items or people, commonly used when the exact total isn't important or known. It is one of the most essential quantifiers in the English language, ...



One of the mistakes often made is over loading an wire electrical box with too many wires. This will cause switches and outlets to not fit correctly and could even cause wires to become damaged. This ...



To find out if your electrical box can handle more wires or devices, ...



The National Electrical Code restricts the number of conductors that are allowed in a single electrical box. How many conductors are allowed is determined by the size of the box and the size of the ...



(3) Support Fittings Fill. Where one or more luminaire studs or hickey are present in the box, a single volume allowance in accordance with Table 314.16(B) shall be made for each type of fitting based on ...



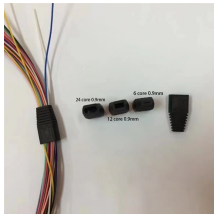
Single Phase Distribution Box generally consists of Double Pole MCBs, Single Pole MCBs, and RCCBs. Single-phase distribution boards are mostly used in domestic house wirings such as ...



The meaning of MANY is consisting of or amounting to a large but indefinite number. How to use many in a sentence.



We use the quantifiers much, many, a lot of, lots of to talk about quantities, amounts and degree. We can use them with a noun (as a determiner) or without a noun (as a pronoun). ...



Junction box sizing refers to determining the minimum cubic inch capacity required for an electrical box based on the number and size of conductors, devices, and fittings it will contain. Proper ...



Learn how to calculate branch circuits, feeders, and service in a one-family dwelling. For additional insightful articles on the National Electrical Code and branch circuits, please follow these ...

Contact Us

For more information, pricing, or custom network solutions, please contact us:

Website: <https://hashherbcafe.co.za>

Email: hello@hashherbcafe.co.za

Phone: +27 63 814 7295

Address: 15 Galaxy Road, Linbro Business Park, Johannesburg, 2065, South Africa

This document is for informational purposes only. Specifications subject to change without notice.

